

N A T U R A L  
image

collection 2012

## Contents - Wigs

INSPIRED			
STYLE	PAGE		
Attract	8	Lottie	14
Bliss	11	Louise	35
Chance	5	Maxine	20
Dream	13	Milady	64
Enthrall	7	Mylie	37
Eternity	11	Nice & Neat	61
Everlasting	12	Paula	28
Heaven	12	Pearl	57
Illusion	9	Petite Fluff	62
Infinity	10	Petite Spirit	64
Invitation	10	Pixie	23
Longing	7	Ruby	56
Mirage	6	Sally	26
Tantalise	8	Serene	19
Time	13	Sharp	20
		Short & Sweet	62
		Short Cut	55
		Small Wonder	63
		Something Special	58
		Spellbound	56
		Spring	52
		Sue	57
		Sultry	62
		Susanna	32
		Suzi	31
		Tara	31
		Timeless	30
		Trixie	37
		Vernice	55
		Vicky	59
		Victoria	17
		Virgo	63
		Zara	21

STYLE	PAGE		
Adele	15	<b>RAQUEL WELCH</b>	
Advantage	27	STYLE	PAGE
Alex	62	Always	46
Angelique	15	Breeze	46
April	26	Cinch	46
Aspire	60	Classic Cut	42
Asset	60	Divine	42
Beverly	36	Dixie Pixie	48
Breeze	27	Easy Going	41
Brooke	54	Enchant	47
Carey	28	Excite	48
Cathy	29	Fanfare	41
Celine	23	Finale	43
Chanelle	19	Finesse	39
Christina	61	Heart Throb	40
Claire	56	Human Hair 18"	48
Commitment	52	Infatuation	49
Concept	54	Power	49
Coral	54	Relentless	49
Corinne	53	Show Stopper	38
Crystal	35	Spotlight	44
Daisy	34	Star Quality	39
Danni	18	Starlight	43
Definitely	59	Tango	47
Demi	16	Top Notch	40
Denice	32	Tres Chic	47
Diana	60	Whisper	44
Dolly	36	Wildfire	48
Duet	64	Winner	45
Elegance	51	Winner Elite	45
Elizabeth	29		
Emily	20	<b>TURBANS &amp;</b>	
Erica	58	<b>HEADSCARVES</b>	
Essence	31	Batik Head Scarf	65
Eva	25	Cotton Headscarf	65
Fern	16	Poly Turban	65
Flora	53	Terry Turban	65
Fresh Start	18	Velvet Turban	65
Gemini	61		
Glaze	36	<b>HAIRPIECES</b>	
Gloria	58	Brigette	66
Grace	17	Integrated Flip	66
Harwood	22	Top Piece	66
Hayley	32		
Holly	64	Wig Care	67
Instinct	30		
Jamie	30		
Jane	51		
Janet	61		
Janie	24		
Jay	32		
Jill	24		
Joanna	34		
Just Right	63		
Kim	57		
Kira	59		
Lauren	63		
Leila	50		
Leonara	33		
Linzi	37		

## Contents - Sections

Inspired Collection	Pg 5 To 13
Beautiful Bobs	Pg 14 To 20
Short Cuts	Pg 21 To 32
Luscious Lengths	Pg 33 To 37
Raquel Welch	Pg 38 To 49
Classic Cuts	Pg 50 To 64
Turbans And Headscarves	Pg 65
Hairpieces	Pg 66
After Care	Pg 67

Wigs featured:  
Longing • Sable Twist  
& Mocha Twist

# INSPIRED Collection

Salon inspired styles with the latest in wig technology combine to make our new INSPIRED collection.



INSPIRED Collection

## Cap Types

All Natural Image wigs are created to be comfortable, chic and ready to wear.

We have an array of cap types made with you in mind, all based on our Comfort Cap technology, to ensure all day comfort and ease.

Our range incorporates exclusive monofilament, hand tied and lace front styles which exemplify the latest in wig technology creating the most realistic and natural looking styles imaginable.

### Comfort Cap



Our Comfort Cap is the modern standard in caps. Lightweight stretch wefts makes this cap light, comfortable and breathable. The soft velvet band at the front, nape and ear tabs ensure all day comfort while the fine Velcro tapes mean that the wig can be adjusted for a custom like fit.

The adjustable ear tabs are crafted out of Flexible Copper and can be tightened to create a comfortable and secure fit, particularly ideal for spectacle wearers.

### Monofilament Part or Crown with Comfort Cap base



The monofilament parting or crown of this cap is hand knotted onto a skin matching base to provide the most natural looking movement and parting. The base features our light, comfortable and breathable Comfort Cap construction whilst the fine Velcro tabs mean that the wig can be adjusted for a custom-like fit.

### Monofilament Cap with Comfort Cap base



The monofilament top of this cap is hand knotted on a skin matching base to provide the most natural looking movement and parting. Depending on the style, some monofilament caps will also have a polyurethane strip at the front to provide a place to attach wig tape for added security.

The base is our Comfort Cap construction which is light, comfortable and breathable while the fine Velcro tapes mean that the wig can be adjusted for a custom like fit.

### Lace Front with Comfort Cap base and Monofilament crown or parting.



The monofilament crown or parting of this cap is hand knotted on a skin matching base to provide the most natural looking movement and parting, and also has the added benefit of a sheer, virtually invisible, hand knotted sheer lace front for off the face styling. The base is our Comfort Cap construction which

is light, comfortable and breathable while the fine Velcro tapes mean that the wig can be adjusted for a custom like fit.

### Monofilament Cap with hand knotted base and Lace Front



Uniquely created for the ultimate in wig fashion, style and comfort. The monofilament top of this cap is hand knotted on a skin matching base to provide the most natural looking movement and parting, whilst the cap is also 100% hand knotted on a contoured, lightweight stretch fabric providing the look of naturally moving hair.

The lace front is hand knotted on an almost invisible mesh that blends in with your own skin tone. This gives the look of hair that is growing right out of your scalp.

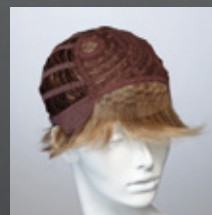
### 100% Hand Knotted base



This cap has a 100% hand made and knotted base for realistic movement and styling.

The soft velvet covered front and ear tabs make this a comfortable style to wear all day.

### Lace Front with Comfort Cap Base



Our Comfort Cap is the modern standard in caps. Lightweight, stretch wefts make this cap light, comfortable and breathable whilst soft velvet bands at the front, nape and ear tabs will ensure all day comfort. The fine Velcro tapes mean that the wig can be adjusted for a custom-like fit. In addition,

these styles also have the added benefit of a sheer, virtually invisible, hand knotted sheer lace front, for off the face styling.

## Chance

**Name:** Chance - CNE

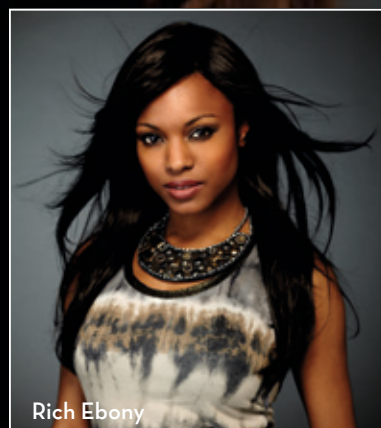
**Description:** Take a Chance with long layers that fall to your back and frame your face. Loaded with movement yet ultra light. The monofilament top gives parting flexibility and natural movement whilst the comfort cap means you stay cool and fresh all day.

**Cap Type:** Monofilament top with Comfort Cap base.

**Cap Sizes:** Petite

**Length From Crown:** 24"  
**Length From Nape:** 16"  
**Length From Side of Head:** 8-12"

**Colours:** Rich Ebony (G2+) • Dark Chocolate Mist (G4+) • Chocolate Copper Mist (G6/30+) • Nutmeg Mist (G10+) • Almond Mist (G14+) • Honey Mist (G16+) • Praline Mist (G19+) • Wheat Mist (G20+) • Ginger Mist (G27+) • Cayenne Mist (G29+) • Paprika Mist (G30+)



Rich Ebony

# Mirage



**Name:** Mirage - MRG

**Description:** Mirage is a stunning style with a sweeping fringe and lots of long, softly cut layers which will frame your face and accentuate your facial features. The Monofilament Top will allow you to part the hair in any direction whilst the lightweight Comfort Cap Base interior will provide a comfortable and cool fit.

**Cap Type:** Monofilament top with Comfort Cap base.

**Cap Sizes:** Petite

**Length From Crown:** 13-14"  
(Layered - Overall 22")

**Length From Nape:** 13-14"  
(Layered - Overall 22")

**Length From Side of Head:** 9-10"

**Colours:** Marble Twist (mbt) • Maple Twist (mpt) • Chocolate Twist (cht) • Mochachino Twist (mct) • Creamy Twist (cyt) • Strawberry Twist (srt) • Golden Wheat (gw) • Sable Twist (sat) • Auburn Twist (aut) • Chocolate Copper (cc) • Light Choc/Candy Blonde (lc/cb) • Vanilla Lush (vl) • Cappuccino (c) • Chestnut (chest) • Espresso (e)



Vanilla Lush

## Longing



Sable Twist & Mochachino Twist

**Name:** Longing - LG

**Description:** A heavy fringe and blunt cut make Longing a perfect modern bob. The hand tied monofilament top and Comfort Cap back ensure that this style will feel as perfect as it looks.

**Cap Type:** Monofilament top with Comfort Cap base

**Cap Sizes:** Petite

**Length From Crown:** 10"

**Length From Nape:** 3-3 1/5"

**Length From Side of Head:** 11"

**Colours:** Marble Twist (mbt) • Maple Twist (mpt) • Chocolate Twist (cht) • Mochachino Twist (mct) • Creamy Twist (cyt) • Strawberry Twist (srt) • Golden Wheat (gw) • Sable Twist (sat) • Auburn Twist (aut) • Chocolate Copper (cc) • Light Choc/Candy Blonde (lc/cb) • Vanilla Lush (vl) • Cappuccino (c) • Chestnut (chest) • Espresso (e)

## Enthral



Strawberry Twist, Espresso & Maple Twist

**Name:** Enthral - EN

**Description:** Short, choppy and beautifully textured with a side-swept fringe, Enthral is a bob with a twist! The Monofilament top will allow you to part the hair in any direction and the Comfort Cap Base will ensure a comfortable, lightweight and cool fit.

**Cap Type:** Monofilament top with Comfort Cap base

**Cap Sizes:** Petite

**Length From Crown:** 5-6"

**Length From Nape:** 3 1/2"

**Length From Side of Head:** 7"

**Colours:** Marble Twist (mbt) • Maple Twist (mpt) • Chocolate Twist (cht) • Mochachino Twist (mct) • Creamy Twist (cyt) • Strawberry Twist (srt) • Golden Wheat (gw) • Sable Twist (sat) • Auburn Twist (aut) • Chocolate Copper (cc) • Light Choc/Candy Blonde (lc/cb) • Vanilla Lush (vl) • Cappuccino (c) • Chestnut (chest) • Espresso (e)

## Attract



Almond Mist

Sugared Walnut

**Name:** Attract - ATR

**Description:** Short, sassy and perfectly pretty, Attract is a modern and neat bob with face-framing layers, a soft fringe and a nape-hugging neck that is tapered to perfection. The result is a head-turning silhouette that looks salon-styled. The Monofilament top and lightweight comfort back will ensure that you feel as good as you look.

**Cap Type:** Monofilament top with Comfort Cap base

**Cap Sizes:** Petite

**Length From Crown:** 9 1/2"

**Length From Nape:** 2"

**Length From Side of Head:** 7-8"

**Colours:** Dark Chocolate Mist (G4+) • Coffee Mist (G6+) • Pecan Mist (G12+) • Almond Mist (G14+) • Praline Mist (G19+) • Wheat Mist (G20+) • Ginger Mist (G27+) • Sugared Walnut (G38+) • Burnished Snow (G60+) • Platinum Mist (G101+)

## Tantalise



Paprika Mist & Rich Ebony

Paprika Mist

**Name:** Tantalise - TTL

**Description:** Gorgeous, straight, face-framing layers that fall to the middle of the back to create lots of natural movement and bounce. The cap is ultra luxurious with a monofilament top and a lace front for an undetectable hairline and is 100% handtied and contoured for a perfect, lightweight fit.

**Cap Type:** Monofilament top with a lace front. 100% hand tied base with countouring for a perfect fit.

**Cap Sizes:** Average

**Length From Crown:** 11" (23" overall length from crown)

**Length From Nape:** 14"

**Length From Side of Head:** 10-15"

**Colours:** Rich Ebony (G2+) • Coffee Mist (G6+) • Dark Chocolate Mist (G4+) • Pecan Mist (G12+) • Almond Mist (G14+) • Praline Mist (G19+) • Wheat Mist (G20+) • Paprika Mist (G30+)



# Illusion

INSPIRED Collection



**Name:** Illusion - IL

**Description:** Beautiful tumbling layers, an expertly cut fringe and lots of volume make Illusion the perfect choice for anyone seeking a modern yet natural looking style. The Monofilament Top and Comfort Cap Base provide ultimate comfort and styling versatility.

**Cap Type:** Monofilament top with Comfort Cap base

**Cap Sizes:** Petite

**Length From Crown:** 10"

(Layered overall 17")

**Length From Nape:** 10"

**Length From Side of Head:** 10"

**Colours:** Marble Twist (mbt) • Maple Twist (mpt) • Chocolate Twist (cht) • Mochachino Twist (mct) • Strawberry Twist (srt) • Golden Wheat (gw) • Sable Twist (sat) • Auburn Twist (aut) • Chocolate Copper (cc) • Light Choc/Candy Blonde (lc/cb) • Vanilla Lush (vl) • Cappuccino (c) • Chestnut (chest)



Auburn Twist

Auburn Twist

[naturalimagewigs.co.uk](http://naturalimagewigs.co.uk)



## Infinity



Pecan Mist

**Name:** Infinity - INF

**Description:** Poker-straight layers which just skim the shoulder-blades and an expertly cut fringe define Infinity - a contemporary style which looks salon-styled. The Monofilament top allows you to part the hair in any direction whilst the deluxe Lace Front and Comfort Cap ensure optimum comfort.

**Cap Type:** Monofilament parting with a Lace Front and Comfort Cap.

**Cap Sizes:** Petite

**Length From Crown:** 4"

**Length From Nape:** 5 1/2"

**Length From Side of Head:** 7 1/2"

**Colours:** Dark Chocolate Mist (G4+) • Coffee Mist (G6+) • Nutmeg Mist (G10+) • Pecan Mist (G12+) • Cappuccino Mist (G13+) • Almond Mist (G14+) • Honey Mist (G16+) • Praline Mist (G19+) • Wheat Mist (G20+) • Cayenne Mist (G29+) • Paprika Mist (G30+)

## Invitation



Creamy Twist

**Name:** Invitation - INV

**Description:** A chic, short style with lots of lightly feathered layers, a wispy fringe and a fitted nape define Invitation, an incredibly flattering wig which also features a Monofilament top and Comfort Cap Base to provide you with versatility in styling and with a comfortable fit.

**Cap Type:** Monofilament top with Comfort Cap base.

**Cap Sizes:** Petite

**Length From Crown:** 4"

**Length From Nape:** 1 1/2"

**Length From Side of Head:** 3"

**Colours:** Marble Twist (mbt) • Maple Twist (mpt) • Chocolate Twist (cht) • Mochachino Twist (mct) • Creamy Twist (cyt) • Strawberry Twist (srt) • Golden Wheat (gw) • Sable Twist (sat) • Auburn Twist (aut) • Chocolate Copper (cc) • Light Choc/Candy Blonde (lc/cb) • Vanilla Lush (vl) • Cappuccino (c) • Chestnut (chest)

# Eternity

**Name:** Eternity - ETY

**Description:** Eternity features contemporary fluff-styling and a beautifully voluminous crown, creating a chic and sophisticated silhouette. The lightweight, 100% handtied back is contoured to provide you with a perfect fit whilst the monofilament top and lace front allow for ultimate ease in styling and comfort for everyday wear.

**Cap Type:** Monofilament top with lace front, hand tied back with contouring across the base Velvet lined ear tabs and back of neck.

**Cap Sizes:** Average

**Length From Crown:** 6"  
**Length From Nape:** 4"  
**Length From Side of Head:** 4"

**Colours:** Coffee Mist (G6+) • Cappuccino Mist (G13+) • Praline Mist (G19+) • Wheat Mist (G20+) • Ginger Mist (G27+) • Burnished Snow (G60+) • Chianti Mist (G135+) • Platinum Mist (G101+)



Chianti Mist

Platinum Mist

# Bliss

**Name:** Bliss - BL

**Description:** Razored layers and just the right amount of volume at the crown make this crop pure Bliss. The monofilament top creates parting flexibility whilst the Comfort Cap base ensures the lightest most comfortable fit.

**Cap Type:** Monofilament top with Comfort Cap base.

**Cap Sizes:** Petite

**Length From Crown:** 4"  
**Length From Nape:** 1"  
**Length From Side of Head:** 2-3"

**Colours:** Dark Chocolate Mist (G4+) • Pecan Mist (G12+) • Cappuccino Mist (G13+) • Almond Mist (G14+) • Praline Mist (G19+) • Wheat Mist (G20+) • Sugared Walnut (G38+) • Chianti Mist (G135+) • Platinum Mist (G101+)



Dark Chocolate Mist

Praline Mist

## Everlasting



Honey Mist



Chocolate Copper Mist



**Name:** Everlasting - EVL

**Description:** A chic bob which just skims the shoulders, Everlasting is a modern style with a sexy, heavy fringe. The Monofilament top also features a polyurethane strip, which provides you with a strip to attach wig tape for extra security. The Comfort Cap construction is light and breathable and will keep you feeling fresh and comfortable all day long.

**Cap Type:** Monofilament top with polythene strip & Comfort Cap base.

**Cap Sizes:** Average

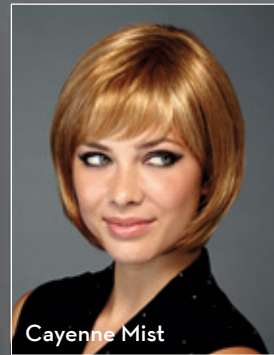
**Length From Crown:** 13"  
**Length From Nape:** 6 1/4"  
**Length From Side of Head:** 10"

**Colours:** Dark Chocolate Mist (G4+) • Coffee Mist (G6+) • Chocolate Copper Mist (G6/30+) • Almond Mist (G14+) • Honey Mist (G16+) • Nutmeg Mist (G10+) • Praline Mist (G19+) • Wheat Mist (G20+) • Cayenne Mist (G29+) • Paprika Mist (G30+)

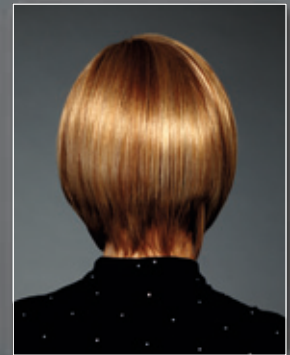
## Heaven



Nutmeg Mist



Cayenne Mist



**Name:** Heaven - HVN

**Description:** Short, sleek layers combined with a choppy fringe make Heaven a perfectly preened bob which is perfect for both daytime and evening wear. The flesh-coloured, monofilament top creates a natural look whilst the deluxe lace front and handtied mid-section will provide a comfortable, feather light feel, wear after wear.

**Cap Type:** Monofilament top with a lace Front. Hand tied mid section with a Comfort Cap base.

**Cap Sizes:** Petite

**Length From Crown:** 8"  
**Length From Nape:** 2 1/2"  
**Length From Side of Head:** 6"

**Colours:** Dark Chocolate Mist (G4+) • Chocolate Copper Mist (G6/30+) • Nutmeg Mist (G10+) • Almond Mist (G14+) • Honey Mist (G16+) • Praline Mist (G19+) • Wheat Mist (G20+) • Cayenne Mist (G29+) • Paprika Mist (G30+) • Platinum Mist (G10+)

Dream



Wheat Mist

Time



Dark Chocolate Mist



Dark Chocolate Mist



Sugared Almond



**Name:** Dream - DM

**Description:** Sleek, chin-length layers teamed with a sweeping fringe make Dream a beautiful choice for both casual and formal looks. The Monofilament top and Comfort Cap base allow for versatility in styling and for a comfortable fit.

**Cap Type:** Monofilament top with Comfort Cap base.

**Cap Sizes:** Average

**Length From Crown:** 8"

**Length From Nape:** 2"

**Length From Side of Head:** 7"

**Colours:** Dark Chocolate Mist (G4+) • Chocolate Copper Mist (G6/30+) • Nutmeg Mist (G10+) • Cappuccino Mist (G13+) • Almond Mist (G14+) • Honey Mist (G16+) • Praline Mist (G19+) • Wheat Mist (G20+) • Paprika Mist (G30+) • Platinum Mist (G101+)

**Name:** Time - TM

**Description:** An easy to wear, cropped style with a modern textured back that just begs to be ruffled up. Time is a sassy and voluminous take on the ever-popular boy cut. The monofilament top ensures the most natural looking movement whilst the Comfort Cap Base provides a feather-light feel for everyday wear.

**Cap Type:** Monofilament top with Comfort Cap base

**Cap Sizes:** Average

**Length From Crown:** 3"

**Length From Nape:** 2"

**Length From Side of Head:** 3"

**Colours:** Dark Chocolate Mist (G4+) • Chocolate Copper Mist (G6/30+) • Pecan Mist (G12+) • Almond Mist (G14+) • Honey Mist (G16+) • Praline Mist (G19+) • Wheat Mist (G20+) • Cayenne Mist (G29+) • Paprika Mist (G30+) • Sugared Almond (G58+) • Platinum Mist (G101+)

# Beautiful Bobs

Lottie

**NEW**

A bob is always chic. Whether you try a sharp modern cut or a more relaxed 'grown out' style, you are guaranteed to turn heads!



**Name:** Lottie - LT

**Description:** Smooth, sleek and super-straight, Lottie is a contemporary take on the timeless bob hair cut and features bluntly cut chin-length layers and a perfectly styled fringe. The Monofilament parting allows you to style the piece in any direction whilst the Comfort Cap Base features lightweight, stretch wefts to ensure a cool, comfortable fit.

**Cap Type:** Monofilament parting with Comfort Cap base.

**Cap Sizes:** Petite

**Length From Crown:** 11"  
**Length From Nape:** 3"  
**Length From Side of Head:** 9"

**Colours:** Marble Twist (mbt) • Maple Twist (mpt) • Chocolate Twist (cht) • Mochachino Twist (mct) • Creamy Twist (cyt) • Strawberry Twist (srt) • Golden Wheat (gw) • Sable Twist (sat) • Auburn Twist (aut) • Chocolate Copper (cc) • Light Choc/Candy Blonde (lc/cb) • Vanilla Lush (vl) • Cappuccino (c) • Chestnut (chest) Espresso (e)



Chocolate Twist

Chocolate Twist

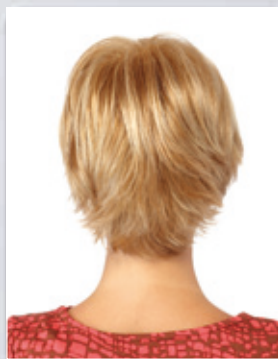
# Adele **NEW**



Cappuccino Mist



Wheat Mist



Cappuccino Mist

**Name:** Adele - ADL

**Description:** Adele is the ultimate short cut style. Short, pretty layers at the front, ruffled layers at the back and a barely-there fringe create a fashionable and carefree look. The Comfort Cap Base will provide you with a breathable, comfortable fit, ideal for everyday wear.

**Cap Type:** Comfort Cap

**Cap Sizes:** Petite

**Length From Crown:** 5 1/4"

**Length From Nape:** 2 3/4"

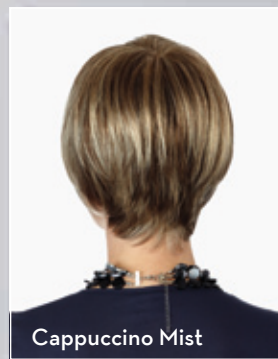
**Length From Side of Head:** 3 1/2"

**Colours:** Honey Mist (G16+) • Praline Mist (G19+) • Wheat Mist (G20+) • Cappuccino Mist (G13+) • Paprika Mist (G30+) • Nutmeg Mist (G10+) • Pecan Mist (G12+) • Platinum Mist (G101+) • Coffee Mist (G6+) • Chocolate Copper Mist (R630+)

# Angelique **NEW**



Coffee Mist



**Name:** Angelique - ANG

**Description:** Angelique is a stunning style featuring expertly cut layers, a choppy, layered fringe and a voluminous crown. The Monofilament crown will create an incredibly natural look, allowing you to part the hair in any direction whilst the Comfort Cap Base will create a breathable and comfortable fit.

**Cap Type:** Monofilament crown with Comfort Cap base.

**Cap Sizes:** Petite

**Length From Crown:** 6 3/4"

**Length From Nape:** 1 3/4"

**Length From Side of Head:** 4 1/4"

**Colours:** Cappuccino Mist (G13+) • Almond Mist (G14+) • Honey Mist (G16+) • Praline Mist (G19+) • Wheat Mist (G20+) • Chianti Mist (G135+) • Nutmeg Mist (G10+) • Pecan Mist (G12+) • Ginger Mist (G27+) • Burnished Snow (G60+) • Platinum Mist (G101+) • Coffee Mist (G6+)

## Demi



**Name:** Demi - DEM

**Description:** A gorgeous hand-tied bob style wig featuring all-over, choppy layers which create lots of natural volume and movement.

**Cap Type:** Handtied Cap

**Cap Sizes:** Average

**Length From Crown:** 3-6"

**Length From Nape:** 4"

**Length From Side of Head:** 5 1/4"

**Colours:** Glazed Hazelnut (R829S) • Midnight Brown (R4) • Buttered Toast (R1416T) • Chocolate Copper (R6/30) • Glazed Sand (R1621S) • Glazed Mocha (R11S) • Glazed Strawberry (R29S) • Silver Mist (R56/60) • Auburn Mist (R3027) • Golden Wheat (R14/88)

## Fern



**Name:** Fern - FER

**Description:** A contemporary take on the classic bob, Fern features a cute, razor-cut fringe with long, choppy layers at the side which can be messed up for a shaggy, carefree look or brushed down for a sleeker look.

**Cap Type:** Comfort Cap

**Cap Sizes:** Average

**Length From Crown:** 2 1/4" - 9"

**Length From Nape:** 2 1/4"

**Length From Side of Head:** 4"

**Colours:** Glazed Hazelnut (R829S) • Ebony (R2) • Midnight Brown (R4) • Chocolate Copper (R6/30) • Ginger Brown (R830) • Golden Wheat (R14/88) • Buttered Toast (R1416T) • Honey Ginger (R14/25) • Glazed Sand (R1621S) • Glazed Strawberry (R29S) • Silver Mist (R56/60) • Glazed Mocha (R11S) • Swedish Blonde (R22) • Chestnut (R10)



Grace

**NEW**

**Name:** Grace - GR

**Description:** Short, sassy and effortlessly cool, Grace is a beautifully cut bob with face-framing layers, a side-swept fringe and natural volume at the crown and at the sides.

**Cap Type:** Lace front with a monofilament part and Comfort Cap.

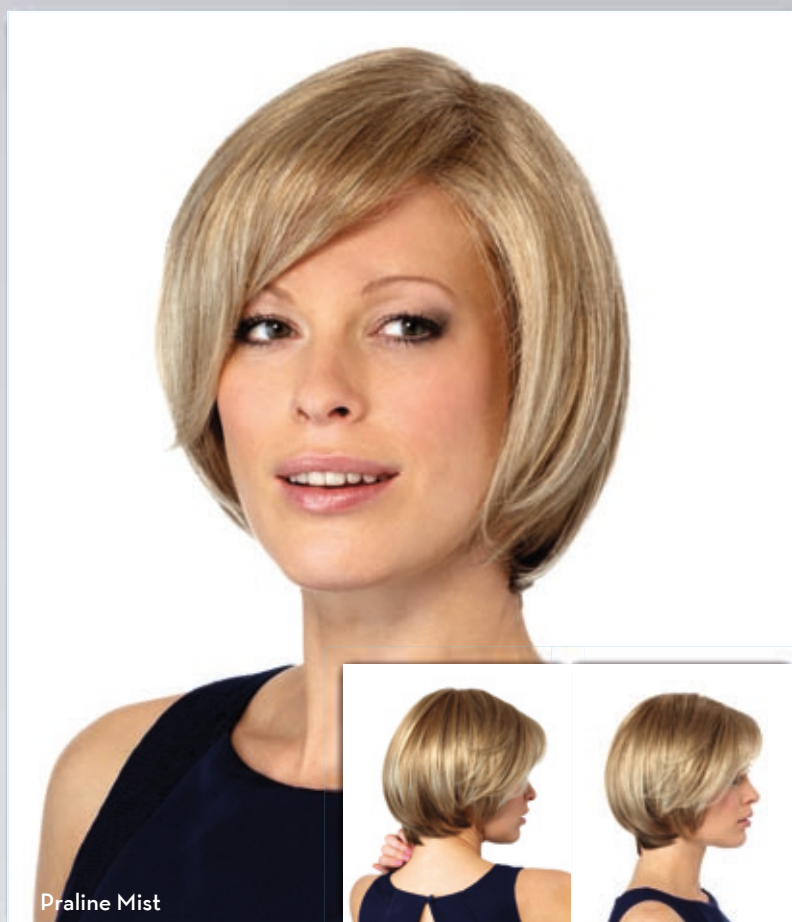
**Cap Sizes:** Petite

**Length From Crown:** 11"

**Length From Nape:** 3"

**Length From Side of Head:** 8-9"

**Colours:** Dark Chocolate Mist (G4+) • Coffee Mist (G6+) • Nutmeg Mist (G10+) • Pecan Mist (G12+) • Cappuccino Mist (G13+) • Almond Mist (G14+) • Honey Mist (G16+) • Praline Mist (G19+) • Wheat Mist (G20+) • Paprika Mist (G30+) • Burnished Snow (G60+) • Platinum Mist (G101+)



Praline Mist

Victoria

**Name:** Victoria - VI

**Description:** A beautifully sharp bob with longer layers at the front teamed with a straight fringe- Victoria is the perfect way to rock the bob without having to commit to a haircut. Ruffle with the fingers to add volume at the sides or comb flat for a sleek look - the choice is yours!

**Cap Type:** Monofilament Crown with Comfort Cap base.

**Cap Sizes:** Average

**Length From Crown:** 2 1/4" - 9"

**Length From Nape:** 2 1/4"

**Length From Side of Head:** 9"

**Colours:** Buttered Toast (R1416T) • Honey Ginger (R14/25) • Golden Wheat (R14/88) • Ebony (R2) • Swedish Blonde (R22) • Ginger Blonde (R25) • Glazed Strawberry (R29S) • Chocolate Copper (R6/30) • Warm Brown (R4/33) • Chestnut (R10)



Chestnut

## Fresh Start



Cappuccino Mist



**Name:** Fresh Start - FSS

**Description:** All-over precision layers, a soft, wispy fringe and a stunning silhouette define Fresh Start. A wig that'll get heads turning.

**Cap Type:** Comfort Cap

**Cap Sizes:** Average

**Length From Crown:** 5 1/4"

**Length From Nape:** 2 1/4"

**Length From Side of Head:** 5 1/4"

**Colours:** Cappuccino Mist (G13+) • Dark Chocolate Mist (G4+) • Nutmeg Mist (G10+) • Buttered Toast Mist (G15+) • Praline Mist (G19+) • Wheat Mist (G20+) • Ginger Mist (G27+) • Paprika Mist (G30+) • Sugared Silver (G56+) • Coffee Mist (G6+) • Chocolate Copper Mist (G630+) • Dark Cinnamon Mist (G829S+)

## Danni



Auburn Mist



**Name:** Danni - DNI

**Description:** A sweet, feminine cut with precision-cut layers at the neck and long wispy layers at the side define Danni- a style which is both simple and sassy. The all-over graduated layers create maximum volume whilst the wispy fringe softens the look and frames the face.

**Cap Type:** Comfort Cap

**Cap Sizes:** Average

**Length From Crown:** 3" - 5 1/2"

**Length From Nape:** 2"

**Length From Side of Head:** 5 1/2"

**Colours:** Auburn Mist (R3027) • Ebony (R2) • Midnight Brown (R4) • Chocolate Copper (R6/30) • Ginger Brown (R830) • Golden Wheat (R14/88) • Buttered Toast (R1416T), Honey Ginger (R14/25) • Swedish Blonde (R22) • Glazed Strawberry (R29S) • Glazed Hazelnut (R829S) • Silver Mist (R56/60) • Glazed Mocha (R11S) • Glazed Sand (R1621S), Chestnut (R10)

## Serene



Nutmeg Mist



**Name:** Serene - SRN

**Description:** A sleek, ready-to-wear wig with a side-swept fringe and voluminous layers at the back make Serene a fashionable choice for anyone seeking a comfortable, easy-to-wear style.

**Cap Type:** Lace front Wig with Comfort Cap base.

**Cap Sizes:** Average

**Length From Crown:** 2 1/2"

**Length From Nape:** 5"

**Length From Side of Head:** 5 1/2"

**Colours:** Cappuccino Mist (G13+) • Coffee Mist (G6+) • Buttered Toast Mist (G15+) • Wheat Mist (G20+) • Ginger Mist (G27+) • Paprika Mist (G30+) • Praline Mist (G19+) • Sugared Silver (G56+) • Dark Cinnamon Mist (G829+) • Chocolate Copper Mist (G6/30+) • Nutmeg Mist (G10+) • Dark Chocolate Mist (G4+)

## Chanelle



Ginger Brown



Golden Walnut

**Name:** Chanelle - CHL

**Description:** An incredibly natural-looking, mid-length bob style with a soft fringe- Chanelle is suitable for any age-group or face shape and easy to wear for casual or for more formal occasions.

**Cap Type:** Monofilament Parting with Comfort Cap base.

**Cap Sizes:** Average

**Length From Crown:** 3"

**Length From Nape:** 1 1/2"

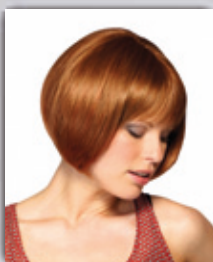
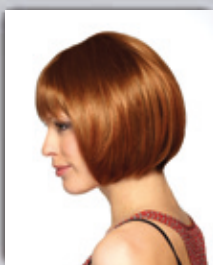
**Length From Side of Head:** 2"

**Colours:** Ginger Brown (JRD 830) • Chocolate Copper (JRD630) • Soft Flame (SF33/24) • Midnight (1B) • Cappuccino (4) • Soft Honey (SF12/28) • Sunkissed Blonde (SF16/88) • Soft Platinum White (SF56/60) • Platinum Lights (SF613/12) • Golden Lights (SF613/14) • Golden Walnut (1416T)

## Maxine



Golden Brown / Irish Red



**Name:** Maxine - MAX

**Description:** An ultra-chic bob cut into the nape of the neck with a soft, wispy fringe which can be brushed forwards or worn to the side. The slightly longer layers at the front create a polished look which comes out winning every time.

**Cap Type:** Monofilament top with Comfort Cap base.

**Cap Sizes:** Average

**Length From Crown:** 13 1/4"

**Length From Nape:** 13"

**Length From Side of Head:** 10 3/4"

**Colours:** Golden Brown/Irish Red (GB/IR) • Autumn Gold/Platinum Blonde (AG/PB) • Cappuccino/Paprika (C/P) • Cinnamon/Spring Honey (C/SH) • Dark Choc/Henna Red (DC/HR) • Dark Rust/Cotton Blonde (DR/C) • Espresso/Honey Red (E/HR) • Light Chocolate/Candy Blonde (LC/CB) • Sunny Auburn/Strawberry Blonde (SA/SB) • Sunset Brown/Candy Blonde (SB/CB) • Firecracker (FC)

## Emily



Chocolate Copper

**Name:** Emily - EMY

**Description:** A timeless bob style featuring a stunning fringe and chin-length layers which are softly curled inwards to frame the face and to add definition.

**Cap Type:** Comfort Cap

**Cap Sizes:** Average

**Length From Crown:** 2 1/2"

**Length From Nape:** 8"

**Length From Side of Head:** 9"

**Colours:** Chocolate Copper (R6/30) • Midnight Brown (R4) • Chestnut (R10) • Glazed Mocha (R11S) • Honey Ginger (R14/25) • Ginger Blonde (R25) • Auburn Mist (R30/27H) • Silver Mist (R56/60) • Glazed Hazelnut (R829S) • Ginger Brown (R830) • Golden Wheat (R14/88) • Glazed Sand (R1621S)

## Sharp



Nutmeg Mist



**Name:** Sharp - SHP

**Description:** A gorgeous wig with all-over lustrous layers and flicked-out ends, Sharp is a stunning wig which is cool, comfortable and ready to wear with a quick shake out of the box.

**Cap Type:** Comfort Cap

**Cap Sizes:** Average

**Length From Crown:** 3"

**Length From Nape:** 6"

**Length From Side of Head:** 7"

**Colours:** Nutmeg Mist (G10+) • Cappuccino Mist (G13+) • Buttered Toast Mist (G15+) • Praline Mist (G19+) • Wheat Mist (G20+) • Sugared Silver (G56+) • Chocolate Copper Mist (G630+) • Dark Cinnamon Mist (G829+) • Dark Chocolate Mist (G4+)

# Short Cuts

Pixie or Crop?  
Fluffed or Slicked?  
We have the perfect  
Short Cut that  
will truly reflect  
your style.

Zara

**NEW**

**Name:** Zara - ZR

**Description:** A classic, short boy cut with lots of textured layers, a soft fringe and longer layers to provide extra coverage around the ears - Zara is a style which is suitable for all age-groups and face-shapes. The Comfort Cap Base construction provides a neat fit which will be ultra-comfortable for all-day wear.

**Cap Type:** Comfort Cap

**Cap Sizes:** Petite

**Length From Crown:** 4"  
**Length From Nape:** 2 1/4"  
**Length From Side of Head:** 2"

**Colours:** Cappuccino Mist (G13+) • Almond Mist (G14+) • Honey Mist (G16+) • Praline Mist (G19+) • Wheat Mist (G20+) • Cayenne Mist (G29+) • Nutmeg Mist (G10+) • Pecan Mist (G12+) • Platinum Mist (G101+) • Sugared Walnut (G38+) • Burnished Snow (G60+) • Coffee Mist (G6+) • Sugared Silver (G56+)



Platinum Mist

## Harwood

NEW



**Name:** Harwood - HRW

**Description:** A close-to-the-head, cropped style which takes inspiration from the timeless pixie haircut. Harwood features lots of wispy layers at the crown and a nape-hugging neck, creating an ultra-chic and coiffed silhouette which looks salon-styled. The Monofilament Crown will allow you to style the hair in any direction whilst the Comfort Cap Base will create a comfortable and flawless fit.

**Cap Type:** Lace Front with a Monofilament Crown and Comfort Cap base

**Cap Sizes:** Average

**Length From Crown:** 4"  
**Length From Nape:** 1 1/2"  
**Length From Side of Head:** 2"

**Colours:** Dark Chocolate Mist (G4+) • Chocolate Copper Mist (G6/30+) • Nutmeg Mist (G10+) • Cappuccino Mist (G13+) • Almond Mist (G14+) • Honey Mist (G16+) • Praline Mist (G19+) • Wheat Mist (G20+) • Cayenne Mist (G29+) • Burnished Snow (G60+) • Platinum Mist (G101+)



Chocolate Copper Mist

Cappuccino Mist

# Pixie

**NEW**



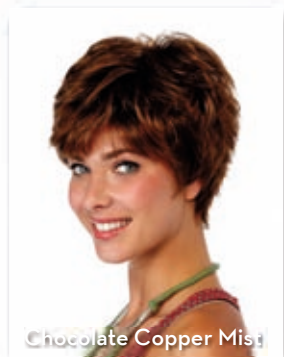
Burnished Snow

# Celine

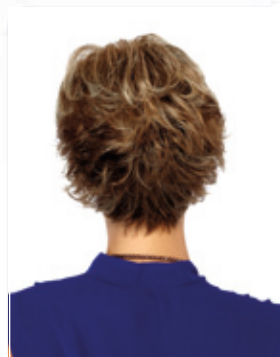
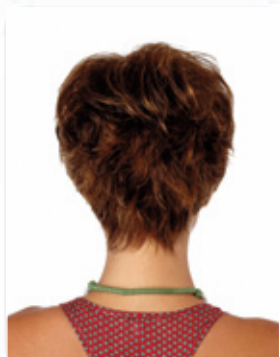
**NEW**



Cappuccino Mist



Chocolate Copper Mist



**Name:** Pixie - PIX

**Description:** A short, shaggy pixie cut with incredible volume created by a multitude of expertly cut layers and a full fringe which skims the eyebrows- Pixie is a delightful style which creates a sassy and striking silhouette. The Comfort Cap Base features lightweight, stretch wefts to ensure a cool, feather-light feel, perfect for everyday wear.

**Cap Type:** Comfort Cap

**Cap Sizes:** Petite

**Length From Crown:** 4"

**Length From Nape:** 2"

**Length From Side of Head:** 2"

**Colours:** Almond Mist (G14+) • Honey Mist (G16+) • Praline Mist (G19+) • Wheat Mist (G20+) • Chianti Mist (G135+) • Nutmeg Mist (G10+) • Pecan Mist (G12+) • Dark Chocolate Mist (G4+) • Chocolate Copper Mist (G6/30+) • Platinum Mist (G101+) • Cappuccino Mist (G13+) • Burnished Snow (G60+)

**Name:** Celine - CLN

**Description:** Celine is a beautifully cut style with lots of layers at the crown and slightly flicked out layers at the back, for optimum volume and movement. The wispy fringe frames the face whilst the Comfort Cap construction creates a neat but cool fit which will keep you comfortable all day long.

**Cap Type:** Comfort Cap

**Cap Sizes:** Petite

**Length From Crown:** 4 3/4"

**Length From Nape:** 1 1/2"

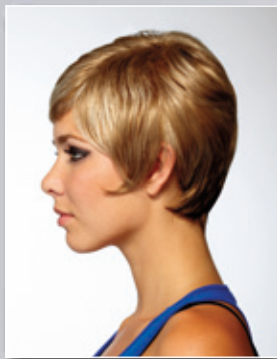
**Length From Side of Head:** 3"

**Colours:** Almond Mist (G14+) • Honey Mist (G16+) • Praline Mist (G19+) • Wheat Mist (G20+) • Ginger Mist (G27+) • Cappuccino Mist (G13+) • Nutmeg Mist (G10+) • Pecan Mist (G12+) • Burnished Snow (G60+) • Platinum Mist (G101+) • Coffee Mist (G6+)

Jill



Praline Mist



Butterscotch Mist

**Name:** Jill - JL

**Description:** A funky, fun to wear wig featuring short, choppy layers which can be worn spiky or brushed flat for a smooth, elegant look.

**Cap Type:** Comfort Cap

**Cap Sizes:** Petite

**Length From Crown:** 3 1/4"

**Length From Nape:** 1 1/2"

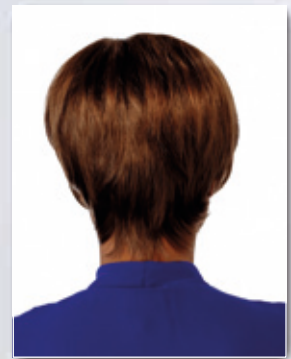
**Length From Side of Head:** 3 1/4"

**Colours:** Silver Mist (56/60) • Silver Mink (48) • Midnight Brown (L4) • Chocolate Copper (L6/30) • Ginger Brown (LG830) • Buttered Toast (LR1416) • Chocolate Copper Mist (G630+) • Nutmeg Mist (G10+) • Cappuccino Mist (G13+) • Buttered Toast Mist (G15+) • Praline Mist (G19+) • Wheat Mist (G20+) • Butterscotch Mist (G25+) • Ginger Mist (G27+) • Sugared Silver (G56+) • Sugared Almond (G58+) • Chianti Mist (G135+)

Janie



Ginger Brown



**Name:** Janie - JNE

**Description:** A modern short style featuring sophisticated layers, a sweet fringe and a lace front which allows for off-the-face styling.

**Cap Type:** Monofilament top with Comfort Cap base.

**Cap Sizes:** Average

**Length From Crown:** 4 - 5 3/4"

**Length From Nape:** 3"

**Length From Side of Head:** 4"

**Colours:** Ginger Brown (R830) • Midnight Brown (R4) • Chocolate Copper (R6/30) • Honey Ginger (R14/25) • Golden Wheat (R14/88) • Glazed Hazelnut (R829S) • Silver Mist (R56/60) • Glazed Mocha (R11S)



Eva **NEW**



**Name:** Eva - EV

**Description:** An elegant style with a voluminous crown, spiky, all-over layers and a subtle fringe define Eva. The perfect style for all-day, everyday wear. The lightweight, Comfort Cap Base will ensure a cool, comfortable fit, wear after wear.

**Cap Type:** Comfort Cap

**Cap Sizes:** Petite

**Length From Crown:** 3"  
**Length From Nape:** 1 1/2"  
**Length From Side of Head:** 2"

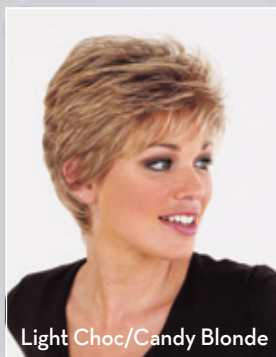
**Colours:** Almond Mist (G14+) • Honey Mist (G16+) • Praline Mist (G19+) • Wheat Mist (G20+) • Chianti Mist (G135+) • Nutmeg Mist (G10+) • Dark Chocolate Mist (G4+) • Chocolate Copper Mist (G6/30+) • Platinum Mist (G101+) • Sugared Walnut (G38+) • Cappuccino Mist (G13+)



April



Glazed Mocha



Light Choc/Candy Blonde

**Name:** April - APR & APRA

**Description:** This short, feathered wig is one of our customer favourites! Ruffle through with the fingers for a striking, spiky look or smooth down for a sleek, pixie look.

**Cap Type:** Comfort Cap

**Cap Sizes:** Petite & Average

**Length From Crown:** 2 1/4" - 4"

**Length From Nape:** 1 3/4"

**Length From Side of Head:** 2 3/4"

**Colours:** Glazed Mocha (GM) • Butterscotch (B) • Cappuccino (C) • Chocolate Copper (CHC) • Ginger Brown (GB) • Light Chocolate/Candy Blonde (LC/CB) • Paprika Root (PR) • Mink (38) • Silver Mist (56/60) • Soft Copper (SF33/29) • Harvest Gold (HG) • Vanilla Lush (VL)

Sally



Golden Lights

**Name:** Sally - SLY

**Description:** A feather-light, sassy pixie cut featuring light layers and a soft fringe makes Sally the perfect choice for anyone seeking comfort and style.

**Cap Type:** Handtied Cap

**Cap Sizes:** Petite

**Length From Crown:** 2" - 3 1/2"

**Length From Nape:** 1 3/4"

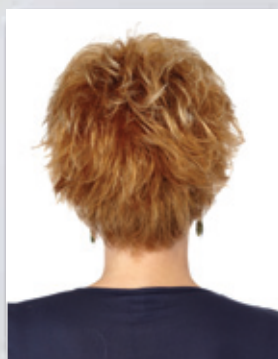
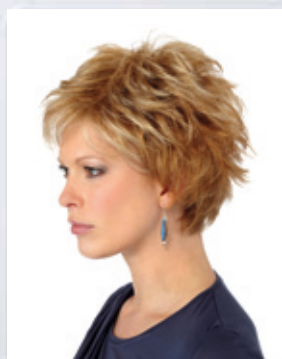
**Length From Side of Head:** 2 3/4"

**Colours:** Soft Mahogany (SF6/130) • Midnight (1B) • Cappuccino (4) • Brazil Nut (8) • Silver Mist (56/60) • Pecan (12) • Ash Brown (14) • Shaded Blonde (JS124) • Frosted Pearl (17/101) • Golden Lights (SF613/14) • Golden Wheat (1488) • Flame (33/24) • Mink (38) • Harvest Gold (HG)

## Advantage



Buttered Toast Mist



**Name:** Advantage - ADV

**Description:** Short, all over textured layers and intense volume define this classic wig. Wear it spiky or smooth, the choice is all yours!

**Cap Type:** Comfort Cap

**Cap Sizes:** Average

**Length From Crown:** 4 1/4 - 3 1/4"

**Length From Nape:** 1 1/2"

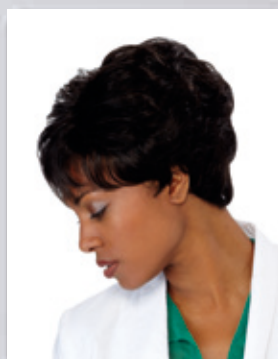
**Length From Side of Head:** 3"

**Colours:** Buttered Toast Mist (G15+) • Chocolate Copper Mist (G6/30+) • Nutmeg Mist (G10+) • Cappuccino Mist (G13+) • Praline Mist (G19+) • Wheat Mist (G20+) • Sugared Silver (G56+) • Dark Cinnamon Mist (G829S) • Dark Chocolate Mist (G4+)

## Breeze



Ebony



Shaded Blonde

**Name:** Breeze - ZBR

**Description:** Softly waved, textured layers and a lightly cut fringe defines Breeze- a classic cut which features lots of natural volume and bounce.

**Cap Type:** Comfort Cap

**Cap Sizes:** Average

**Length From Crown:** 2"

**Length From Nape:** 4"

**Length From Side of Head:** 4"

**Colours:** Ebony (2) • Brazil Nut (8) • Mocha (11) • Caramel (12/16) • Sahara (1822) • Chestnut/Bordeaux (31/33) • Soft Mink (48/38) • Platinum Grey/Pewter(56/51) • Butterscotch (1627) • Shaded Blonde (JS124)

Paula



**Name:** Paula - PAU

**Description:** Choppy layers teamed with a funky full fringe makes Paula a stunning wig style with plenty of definition and volume.

**Cap Type:** Comfort Cap

**Cap Sizes:** Average

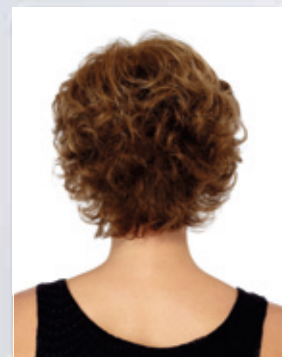
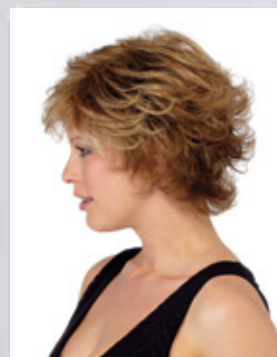
**Length From Crown:** 3" - 4 3/4"

**Length From Nape:** 2 1/4"

**Length From Side of Head:** 3"

**Colours:** Soft Mahogany (SF6/130) • Soft Dark Walnut (SF1B/8) • Soft Buttered Toast (SF10/26) • Soft Honey (SF12/28) • Soft Wheat (SF23/20) • Soft Flame (SF33/24) • Soft Copper (SF33/29) • Soft White Mink (SF38/56) • Soft Silvery Moon (SF51/60) • Golden Lights (SF613/14) • Shaded Blonde (JS124)

Carey



**Name:** Carey - CY

**Description:** A classic short styled wig featuring soft, barely waved layers, a light fringe and plenty of natural body and movement.

**Cap Type:** Comfort Cap

**Cap Sizes:** Average

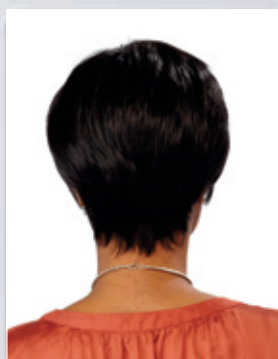
**Length From Crown:** 2 3/4" - 4 3/4"

**Length From Nape:** 4"

**Length From Side of Head:** 4"

**Colours:** Soft Honey (SF12/28) • Marble Brown (MB) • Harvest Gold (HG) • Dark Chocolate (6) • Golden Lights (SF613/14) • Soft Mahogany (SF6/130) • Soft Buttered Toast (SF10/26)

## Cathy



## Elizabeth



**Name:** Cathy - CAT

**Description:** Cathy is a classic, short wedge style wig with a close cut nape and a heavy fringe. On lighter colours the subtly darker wedge back and highlighted layers at the top make it a firm favourite.

**Cap Type:** Comfort Cap

**Cap Sizes:** Average

**Length From Crown:** 3" - 4 3/4"

**Length From Nape:** 2 1/4"

**Length From Side of Head:** 3 1/2"

**Colours:** Espresso (E) • Dark Chocolate (DC) • Butterscotch(B) • Burgundy Rosa (BR) • Glazed Hazelnut (GH) • Glazed Mocha (GM) • Golden Wheat (GW) • Harvest Gold (HG) • Marble Brown (MB) • Silver Mist (SM)

**Name:** Elizabeth - EL

**Description:** A classic chin-length style with a layered top and sides that graduate to the collar make Elizabeth a pretty, elegant wig which is perfect for any occasion.

**Cap Type:** Comfort Cap

**Cap Sizes:** Petite

**Length From Crown:** 3" - 5 1/2"

**Length From Nape:** 4 1/2"

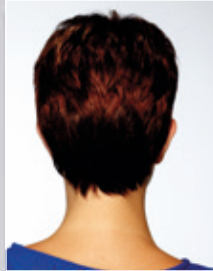
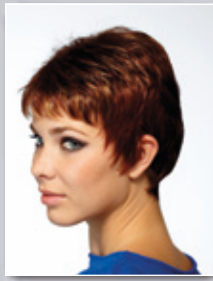
**Length From Side of Head:** 5 1/2"

**Colours:** Golden Lights (SF613/14) • Shaded Blonde (JS124) • Soft Buttered Toast (SF 10/26) • Soft Honey (SF12/28) • Soft Dark Walnut (SF1B/8) • Soft Wheat (SF23/20) • Soft Flame (SF33/24) • Soft White Mink (SF 38/56) • Soft Silvery Moon (SF51/60) • Soft Mahogany (SF6/130) • Soft Copper (SF33/29)

## Jamie



Soft Flame



**Name:** Jamie - JME

**Description:** A timeless short cut style featuring a barely-there fringe and lots of spiky layers which create intense volume at the crown.

**Cap Type:** Comfort Cap

**Cap Sizes:** Petite

**Length From Crown:** 2"

**Length From Nape:** 1"

**Length From Side of Head:** 2"

**Colours:** Soft Flame (SF33/24) • Marble Brown (MB) • Harvest Gold (HG) • Vanilla Lush (VL) • Midnight (1B) • Cappuccino (4) • Dark Chocolate (6) • Soft Mahogany (SF6/130) • Soft Glazed Honey (SF13/16) • Soft Silvery Moon (SF 51/60) • Golden Lights (F613/14)

## Instinct

**Name:** Instinct - INS

**Description:** One of the most popular short styles in our collection, Instinct is a lightweight, comfortable piece that is incredibly easy to wear and to style. A multitude of wispy layers at the fringe combined with lots of height at the crown create a sophisticated look that looks salon-styled.

**Cap Type:** Comfort Cap

**Cap Sizes:** Petite

**Length From Crown:** 3 1/2"

**Length From Nape:** 2 3/4"

**Length From Side of Head:** 3 1/4"

**Colours:** Chianti Mist (G135+) • Midnight Brown (L4) • Chocolate Copper (L6/30) • Silver Mink (48) • Platinum White (56/60) • Ginger Brown (LG830) • Buttered Toast (LR1416) • Cappuccino Mist (G13+) • Buttered Toast Mist (G15+) • Wheat Mist (G20+) • Butterscotch Mist (G25+) • Ginger Mist (G27+) • Sugared Almond (G58+) • Dark Copper Mist (130+) • Chocolate Copper Mist (G630+)

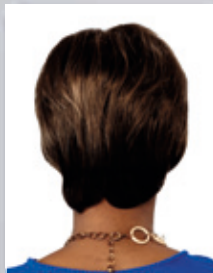


Chianti Mist

## Timeless



Coffee Mist



**Name:** Timeless - TLS

**Description:** A textured fringe teamed with expertly trimmed layers and a nape hugging neck create a stylish and sassy silhouette which is ideal for both casual and formal wear.

**Cap Type:** Comfort Cap

**Cap Sizes:** Average

**Length From Crown:** 4"

**Length From Nape:** 3"

**Length From Side of Head:** 3 1/2"

**Colours:** Coffee Mist (G6+) • Chocolate Copper (L6/30) • Platinum White (56/60) • Silver Mink (48) • Ginger Brown (LG830) • Buttered Toast (LR1416) • Cappuccino Mist (G13+) • Buttered Toast Mist (G15+) • Wheat Mist (G20+) • Butterscotch Mist (G25+) • Ginger Mist (G27+) • Dark Copper Mist (G130+) • Chianti Mist (G135+) • Nutmeg Mist (G10+) • Sugared Charcoal (511C) • Sugared Silver (G56+) • Praline Mist (G19+) • Chocolate Copper Mist (G630+)

# Essence

**Name:** Essence - ESS

**Description:** A cropped style with lots of short, textured layers and a multi-layered fringe defines Essence- an elegant, natural-looking and easy-to-wear wig which features a voluminous crown and longer layers at the neck and ear for extra coverage.

**Cap Type:** Comfort Cap

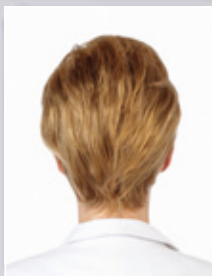
**Cap Sizes:** Average

**Length From Crown:** 3 1/2" - 4"

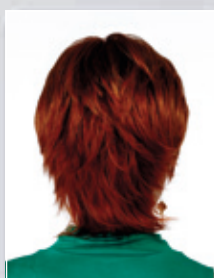
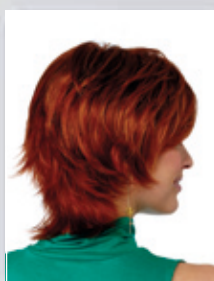
**Length From Nape:** 1 1/2"

**Length From Side of Head:** 3"

**Colours:** Buttered Toast (LR1416) • Chocolate Copper (L6/30) • Ginger Brown (LG830) • Silver Mink (48C) • Cappuccino Mist (G13+) • Buttered Toast Mist (G15+) • Wheat Mist (G20+) • Ginger Mist (G27+) • Sugared Almond (G58+) • Platinum White (56/60)



# Suzi



**Name:** Suzi - SZI

**Description:** Softly cut layers, a wispy fringe and a razor cut neck which creates beautiful feathery flicks- there's no end to the qualities of this wig. The fringe can be brushed forwards or worn to the side and the all-over layers can be fluffed up for maximum volume or brushed flat for a sleek and tidy look.

**Cap Type:** Monofilament Crown with Comfort Cap base.

**Cap Sizes:** Petite

**Length From Crown:** 3 1/4" - 5"

**Length From Nape:** 5"

**Length From Side of Head:** 4 1/4"

**Colours:** Chestnut (R10) • Pearl Platinum (R101) • Glazed Mocha (R11S) • Buttered Toast (R1416T) • Honey Ginger (R14/25) • Golden Wheat (R14/88) • Glazed Sand (R1621S) • Ebony (R2) • Swedish Blonde (R22) • Glazed Fire (R28S) • Glazed Strawberry (R29S) • Midnight Brown (R4) • Chocolate Copper (R6/30) • Ginger Brown (R830)

# NEW Tara

**Name:** Tara - TARA

**Description:** A beautifully lightweight and layered style featuring a soft fringe and expertly cut, flicked out layers at the back which create lots of movement and bounce.

**Cap Type:** Comfort Cap

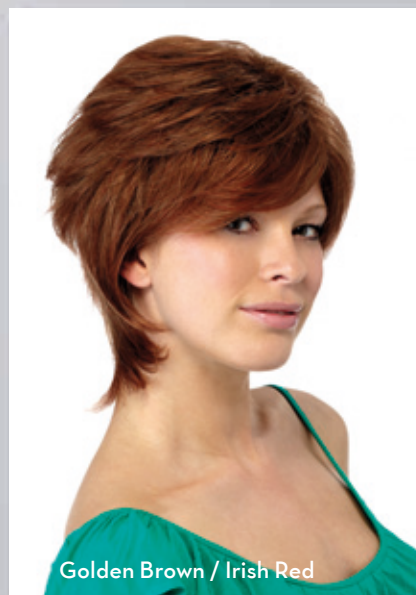
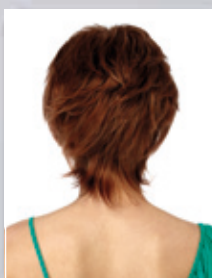
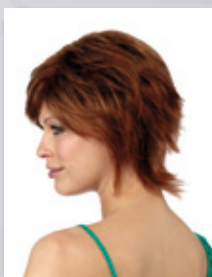
**Cap Sizes:** Average

**Length From Crown:** 5"

**Length From Nape:** 4 1/2"

**Length From Side of Head:** 4"

**Colours:** Soft Wheat (SF23/20) • Butterscotch (B) • Cappuccino (C) • Chestnut (CH) • Chocolate Copper (CH/C) • Golden Brown/Irish Red (GB/IR) • Golden Wheat (GW) • Harvest Gold (HG) • Light Chocolate/Candy Blonde (LC/CB) • Warm Brown (WB)





**Name:** Susanna - SSA

**Description:** Light as air and loaded with layers- Susanna is a gorgeous wig style which tapers at the neck to create a natural look and a comfortable fit.

**Cap Type:** Comfort Cap

**Cap Sizes:** Average

**Length From Crown:** 2 1/2 - 3 3/4"

**Length From Nape:** 3 1/2"

**Length From Side of Head:** 3"

**Colours:** Harvest Gold (HG) • Nut Brown (4/8) • Soft Mahogany (SF6/130) • Shaded Blonde (JS124) • Flame (33/24) • Warm Brazil Nut (830) • Golden Wheat (1488) • Golden Lights (SF613/14) • Silver Mist (SM) • Mink (38)



**Name:** Hayley - HAY

**Description:** A short, fashionable style with wispy layers which create an abundance of volume and movement and full, flicked out layers at the back.

**Cap Type:** Comfort Cap

**Cap Sizes:** Petite

**Length From Crown:** 2 1/2"

**Length From Nape:** 2"

**Length From Side of Head:** 2"

**Colours:** Marble Brown (MB) • Harvest Gold (HG) • Vanilla Lush (VL) • Dark Chocolate (6) • Soft Mahogany (SF6/130) • Brazil Nut (8) • Soft Buttered Toast (SF10/26) • Soft Honey (SF12/28) • Soft Silvery Moon (SF51/60)

## Jay

**Name:** Jay - JY

**Description:** An elegant cropped style featuring all-over layers and a neat fringe.

**Cap Type:** Comfort Cap

**Cap Sizes:** Petite

**Length From Crown:** 1 1/2"

**Length From Nape:** 2 1/2"

**Length From Side of Head:** 2 1/2"

**Colours:** Golden Lights (SF613/14) • Marble Brown (MB) • Vanilla Lush (VL) • Harvest Gold (HG) • Pearl (101) • Soft Glazed Honey (SF13/16) • Soft Mahogany (SF6/130) • Soft Flame (SF33/24) • Soft Silvery Moon (SF51/60)



**Name:** Denice - DNC

**Description:** A close-to-the head, cropped style with lots of layers and a face-framing fringe defines Denice- a supremely versatile wig which is perfect for all-day wear.

**Cap Type:** Comfort Cap

**Cap Sizes:** Average

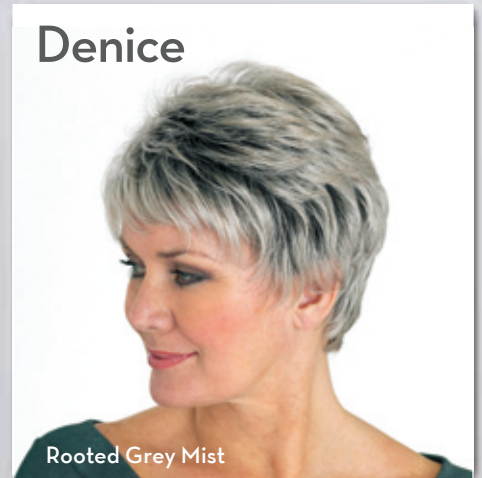
**Length From Crown:** 2 3/4"

**Length From Nape:** 1 3/4"

**Length From Side of Head:** 2 1/4"

**Colours:** Rooted Grey Mist (56#2) • Nut Brown (4/8) • Shaded Blonde (JS124) • Golden Wheat (1488) • Warm Brazil Nut (8/30) • Golden Lights (SF613/14) • Silver Mist (56/60) • Harvest Gold (HG) • Spice (SP)

## Denice





# Luscious Lengths

Whether it just skims the shoulders or flows down your back, here you will find long hair that just begs to be swung.

Leonora

**NEW**

**Name:** Leonora - LEO

**Description:** Flattering shoulder length hair with gentle layering and body make this an easy yet stylish wig to wear. The full fringe and perfectly tapered sides ensure this is super flattering for almost every face shape. In addition the Comfort Cap base will provide you with a breathable and comfortable fit - ideal for everyday wear.

**Cap Type:** Comfort Cap

**Cap Sizes:** Average

**Length From Crown:** 6 1/2"  
**Length From Nape:** 6 1/4"  
**Length From Side of Head:** 7 1/2"

**Colours:** Coffee Mist (G6+) • Nutmeg Mist (G10+) • Pecan Mist (G12+) • Cappuccino Mist (G13+) • Almond Mist (G14+) • Honey Mist (G16+) • Praline Mist (G19+) • Wheat Mist (G20+) • Ginger Mist (G27+) • Chianti Mist (G135+) • Platinum Mist (G101+)



Coffee Mist

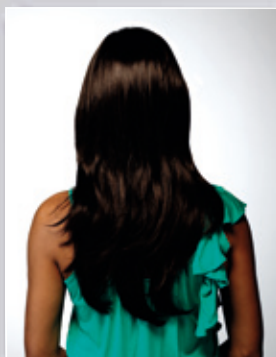
## Joanna



Harvest Gold



Cappuccino



**Name:** Joanna - JOA

**Description:** Joanna is one of the best-selling pieces in our entire collection. Luxuriously long with beautifully crafted layers and light, natural waves make this a style which is easy to wear down and equally simple to pin up or style into updos.

**Cap Type:** Comfort Cap

**Cap Sizes:** Average

**Length From Crown:** 16 1/2"

**Length From Nape:** 16 1/2"

**Length From Side of Head:** 10 3/4"

**Colours:** Cappuccino (C) • Blonde Chocolate (BC) • Burgundy Rosa (BR) • Butterscotch(B) • Chestnut (CH) • Chocolate Copper (CHC) • Espresso (E) • Ginger Brown (GB) • Harvest Gold (HG) • Paprika Root (PR) • Swedish Blonde (SWB) • Vanilla Lush (VL)

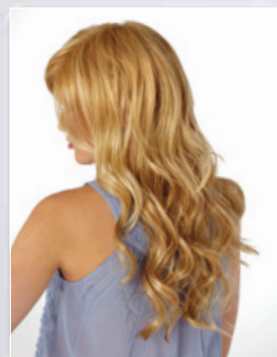
## Daisy



Honey Ginger



Honey Ginger



**Name:** Daisy - DSY

**Description:** A deluxe piece which is comfortable and stunning, Daisy features cascades of long, tumbling mermaid waves and a soft, side-swept fringe. The cool, breathable monofilament cap is comfortable to wear and makes styling incredibly easy, giving you freedom to part the hair in the direction of your choice.

**Cap Type:** Monofilament Crown with Comfort Cap base.

**Cap Sizes:** Average

**Length From Crown:** 2"

**Length From Nape:** 1"

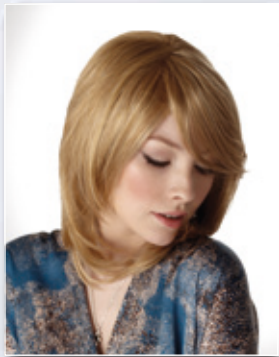
**Length From Side of Head:** 2"

**Colours:** Honey Ginger (R14/25) • Chestnut (R10) • Glazed Mocha (R11S) • Buttered Toast ( R1416T) • Glazed Sand (R1621S) • Ebony (R2) • Swedish Blonde (R22) • Glazed Fire(R28S) • Glazed Strawberry (R29S) • Midnight Brown (R4) • Chocolate Copper (R6/30) • Ginger Brown (R830) • Golden Wheat (R1488)

## Louise



Butterscotch



Glazed Mocha

**Name:** Louise - LOU

**Description:** Beautiful, tumbling layers which fall to the shoulders and a soft, tapered, sweeping fringe are just some of the features which make Louise one of our most popular medium length styles.

**Cap Type:** Monofilament top with Comfort Cap base

**Cap Sizes:** Average

**Length From Crown:** 1 3/4" - 10 1/2"

**Length From Nape:** 9 1/2"

**Length From Side of Head:** 9 1/2"

**Colours:** Butterscotch (B) • Burgundy Rosa (BR) • Cappuccino (C) • Chocolate Copper (CHC) • Espresso (E) • Ginger Brown (GB) • Glazed Mocha (GM) • Harvest Gold (HG) • Light Chocolate/Candy Blonde (LC/CB) • Paprika Root (PR) • Vanilla Lush (VL)

## Crystal



Chocolate Copper

**Name:** Crystal - CRY

**Description:** Crystal is a stunning long and layered wig with lots of texture and feathered flicks which create natural movement and bounce. The result is a comfortable, eye-catching look which creates a stunning silhouette.

**Cap Type:** Monofilament Parting with Comfort Cap base.

**Cap Sizes:** Average

**Length From Crown:** 1 3/4" - 9"

**Length From Nape:** 10"

**Length From Side of Head:** 8"

**Colours:** Chocolate Copper (CHC) • Butterscotch (B) • Cappuccino (C) • Chestnut (CH) • Espresso (E) • Ginger Brown (GB) • Glazed Mocha (GM) • Harvest Gold (HG) • Paprika Root (PR) • Swedish Blonde (SWB) • Vanilla Lush (VL) • Warm Brown (WB)

## Dolly



Ginger Brown

Butterscotch

**Name:** Dolly - DOL

**Description:** A deluxe, thick and textured piece with glamorous, flicked out layers all-over and a pretty fringe. This premium piece also comes on a monofilament cap, which allows you to part the hair in any direction, giving the appearance of natural, growing hair.

**Cap Type:** Monofilament top with Comfort Cap base.

**Cap Sizes:** Average

**Length From Crown:** 14"

**Length From Nape:** 13 1/2"

**Length From Side of Head:** 11"

**Colours:** Ginger Brown (GB) • Cappuccino (C) • Burgundy Rosa (BR) • Strawberry Blonde (SB) • Espresso (E) • Butterscotch (B) • Harvest Gold (HG) • Glazed Mocha (GM) • Paprika Root (PR) • Vanilla Lush (VL) • Swedish Blonde (SWB) • Chocolate Copper (CHC)

## Beverley

**Name:** Beverley - BEV

**Description:** An extremely versatile style featuring a side-swept fringe and lots of feathered layers at the front to frame the face. Easy to wear and flattering on a range of age-groups and face shapes, Beverley also comes in a range of beautiful, warm tones.

**Cap Type:** Comfort Cap

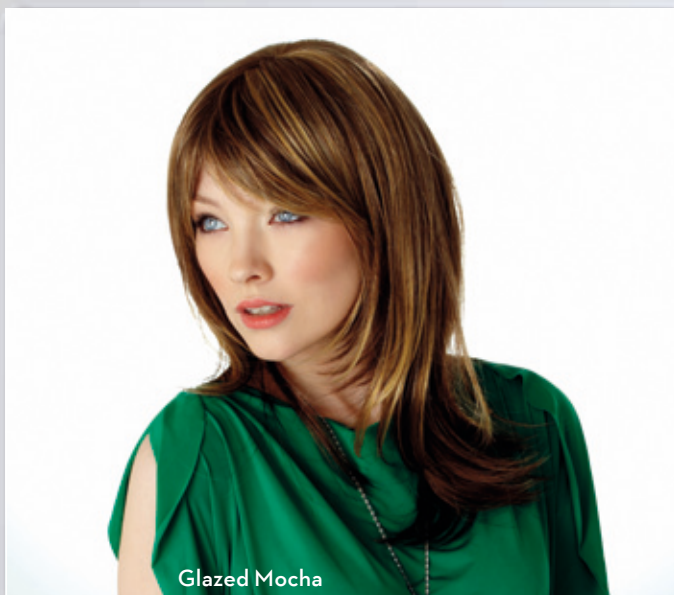
**Cap Sizes:** Average

**Length From Crown:** 11"

**Length From Nape:** 13"

**Length From Side of Head:** 15"

**Colours:** Glazed Mocha (R11S) • Midnight (1B) • Midnight Brown (R4) • Chocolate Copper (R6/30) • Chestnut (R10) • Ginger Blonde (R25) • Golden Wheat (R14/88) • Buttered Toast (R1416T) • Ginger Brown (R830) • Blonde Chocolate (P14)



Glazed Mocha

## Glaze



Buttered Toast

Ginger Brown

**Name:** Glaze - GLZ

**Description:** Glaze is a premium quality lace front wig which features divine cascades of long, layered and tumbling curls. Simply shake and scrunch with your hands for perfect curls which will be the object of everyone's attention.

**Cap Type:** Lace Front Wig with Comfort Cap base.

**Cap Sizes:** Average

**Length From Crown:** 14 1/8"

**Length From Nape:** 13 1/2"

**Length From Side of Head:** 11 1/4"

**Colours:** Ginger Brown (GB) • Butterscotch (B) • Buttered Toast (BT) • Cappuccino (C) • Chocolate Copper (CHC) • Espresso (E) • Golden Wheat (GW) • Harvest Gold (HG) • Light Chocolate/Candy Blonde (LC/CB) • Vanilla Lush (VL) • Warm Brown (WB)

# Mylie

**Name:** Mylie - MYL

**Description:** Face framing layers, a blunt fringe and a soft silhouette defines Mylie, a sweet, classic style with fashionable features which are flattering for all face-shapes and age-groups.

**Cap Type:** Comfort Cap

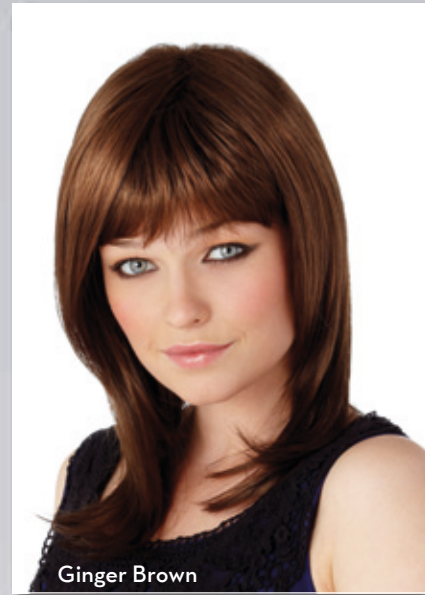
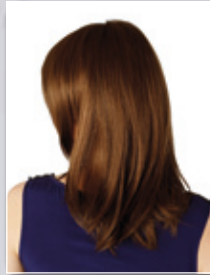
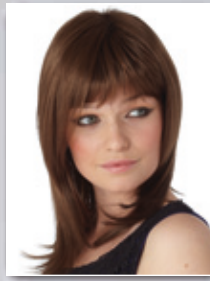
**Cap Sizes:** Average

**Length From Crown:** 2 3/4" - 12 1/2"

**Length From Nape:** 10"

**Length From Side of Head:** 8 1/2"

**Colours:** Ginger Brown (R830) • Chestnut (R10) • Glazed Mocha (R11S) • Buttered Toast (R1416T) • Honey Ginger (R14/25) • Golden Wheat (R14/88) • Glazed Sand (R1621S) • Ebony (R2) • Swedish Blonde (R22) • Glazed Fire(R28S) • Glazed Strawberry (R29S) • Midnight Brown (R4) • Chocolate Copper (R6/30)



Ginger Brown

# Trixie



Chocolate Copper



Harvest Gold

**Name:** Trixie - TRX

**Description:** Shoulder skimming length teamed with softly cut layers make Trixie an ideal choice for anyone searching for an incredibly natural style which can be worn easily by day and night.

**Cap Type:** Lace front Wig with Comfort Cap base.

**Cap Sizes:** Average

**Length From Crown:** 14 1/8"

**Length From Nape:** 13 1/2"

**Length From Side of Head:** 11 1/4"

**Colours:** Chocolate Copper (CHC) • Paprika Root (PR) • Cappuccino (C) • Chestnut (CH) • Espresso (E) • Butterscotch(B) • Harvest Gold(HG) • Vanilla Lush (VL) • Ginger Brown (GB) • Light Chocolate/Candy Blonde (LC/CB) • Golden Wheat (GW) • Warm Brown (WB)

# Linzi

**Name:** Linzi - LZI

**Description:** Comfortable and supremely flattering for both casual and occasion wear, Linzi is a longer take of the bob hairstyle and features a mixture of short to mid-length layers which barely skim the shoulders.

**Cap Type:** Monofilament Parting with Comfort Cap base.

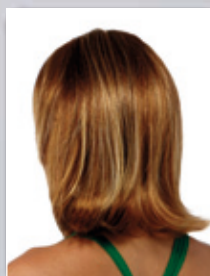
**Cap Sizes:** Average

**Length From Crown:** 11"

**Length From Nape:** 6"

**Length From Side of Head:** 10"

**Colours:** Glazed Strawberry (R29S) • Chestnut (R10) • Glazed Mocha (R11S) • Honey Ginger (R14/25) • Buttered Toast (R1416T) • Glazed Sand ( R 1621S) • Ebony (R2) • Swedish Blonde (R22) • Glazed Fire(R28S) • Midnight Brown (R4) • Chocolate Copper (R6/30) • Ginger Brown (R830) • Golden Wheat (R14/88)



Glazed Strawberry

Show Stopper

**NEW**

RAQUEL  
WELCH™

wig and clip-in extensions collection

The secret to hair that is glamorous, easy and elegant at any time of day?

Created with the latest in wig technology and based on the patented Memory Cap® all Raquel Welch wigs are designed exclusively to help you look your best no matter what the day holds.

And with special details such as the Sheer Indulgence tops and partings or lace fronts for off the face styling, perfect hair has never been easier.



**Name:** Show Stopper - SHW

**Cap Sizes:** Average

**Description:** A total Showstopper! This straight to the shoulder length wig has all the elements that a luxury wig needs, as well as a modern, fashionable cut. With the styleable Tru2life fibre you can wear it as it comes or style with a soft wave.

**Length From Crown:** 12"  
**Length From Nape:** 12"  
**Length From Side of Head:** 11 1/2"

**Cap Type:** Sheer Indulgence lace front monofilament top, Memory Cap II base.

**Colours:** Dark Chocolate (RL6/8) • Sunlit Chestnut (RL10/12) • Off Black (RL2/4) • Black Coffee (RL4/6) • Copper Mahogany (RL6/30) • Honey Toast (RL12/16) • Pale Golden Honey (RL16/88) • Biscuit (RL19/23) • Golden Pecan (RL13/88) • Rusty Auburn (RL30/27) • Deepest Ruby (RL33/35) • Cinnabar (RL32/31) • Hazelnut (RL8/29)

**Fibre:** Tru2life Fibre

Deepest Ruby

Finesse

NEW



Glazed Strawberry

Star Quality

NEW



Glazed Hazelnut



Glazed Strawberry



Glazed Fire

**Name:** Finesse - FSE

**Description:** Hair that looks just as good at midnight as it did at 8am is possible! This beautifully crafted just below the chin page cut has sleek sides that are graduated to the nape and a feather fringe. Finesse also features the Sheer Indulgence monofilament crown with the Memory Cap II base for the most natural, comfortable fit.

**Cap Type:** Sheer Indulgence Monofilament Crown with Memory Cap II base.

**Fibre:** Vibralite

**Cap Sizes:** Average

**Length From Crown:** 8 1/2"

**Length From Nape:** 2"

**Length From Side of Head:** 6 3/4"

**Colours:** Glazed Mocha (R11S) • Glazed Hazelnut (R829S) • Chestnut (R10) • Ebony (R2) • Midnight Brown (R4) • Glazed Sand ( R 1621S) • Golden Wheat ( R14/88) • Buttered Toast ( R1416T) • Glazed Vanilla (R23S) • Ginger Blonde (R25) • Chocolate Copper (R6/30) • Glazed Fire(R28S) • Glazed Strawberry (R29S) • Glazed Auburn (R3329S) • Honey Pecan (R12/26)

**Name:** Star Quality - SQ

**Description:** Shine on in this beautifully cut, straight and long wig which gives you the option of wearing the fringe forwards or side swept. The lace front provides the option for off the face styling, whilst the memory cap ii ensures all day comfort.

**Cap Type:** Sheer Indulgence Lace Front, Monofilament Part & Memory Cap II base.

**Fibre:** Vibralite

**Cap Sizes:** Average

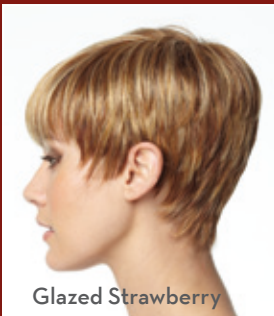
**Length From Crown:** 10 1/2"

**Length From Nape:** 12"

**Length From Side of Head:** 10"

**Colours:** Glazed Mocha (R11S) • Glazed Hazelnut (R829S) • Chestnut (R10) • Ebony (R2) • Midnight Brown (R4) • Glazed Sand (R1621S) • Golden Wheat ( R14/88) • Buttered Toast ( R1416T) • Glazed Vanilla (R23S) • Ginger Blonde (R25) • Chocolate Copper (R6/30) • Glazed Fire(R28S) • Glazed Strawberry (R29S) • Glazed Auburn (R3329S)

Top Notch **NEW**



**Name:** Top Notch - TN

**Description:** Short and sassy, this boy cut has a straight top with a blunt cut fringe plus razored, layered short sides and a neck hugging nape. The monofilament crown ensures that the hair falls naturally and the Comfort Cap II base means you'll be comfortable all day.

**Cap Type:** Sheer Indulgence Monofilament Crown, Memory Cap II base.

**Fibre:** Vibralite

**Cap Sizes:** Average

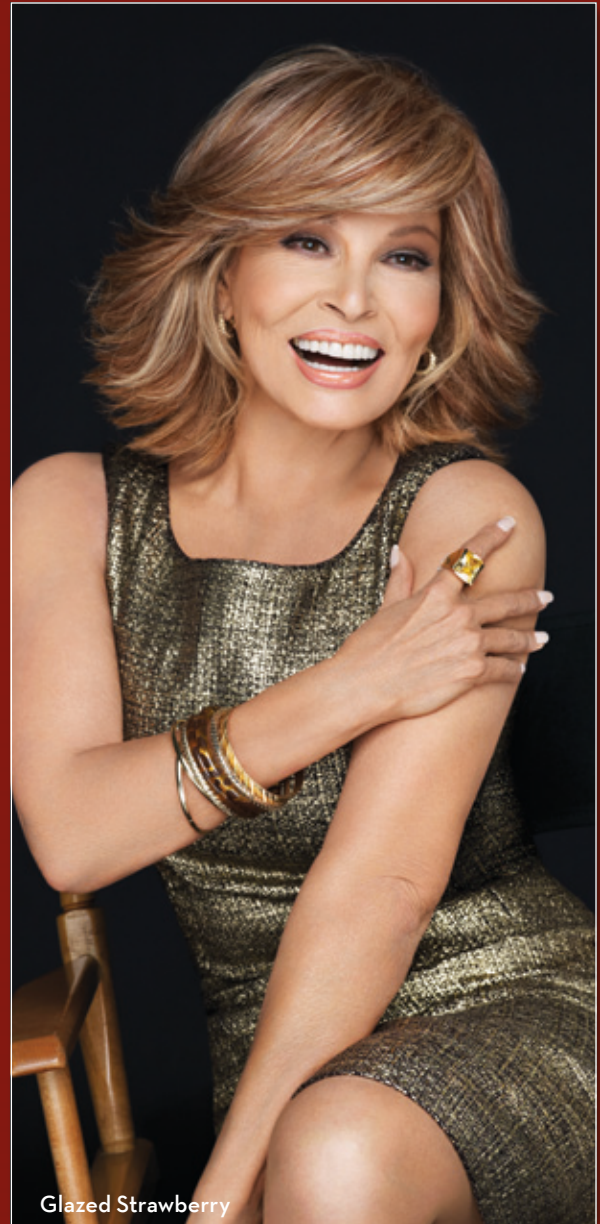
**Length From Crown:** 4 1/2"

**Length From Nape:** 1 3/4"

**Length From Side of Head:** 2"

**Colours:** Glazed Mocha (R11S) • Glazed Hazelnut (R829S) • Chestnut (R10) • Ebony (R2) • Midnight Brown (R4) • Glazed Sand (R1621S) • Golden Wheat (R14/88) • Buttered Toast (R1416T) • Glazed Vanilla (R23S) • Ginger Blonde (R25) • Chocolate Copper (R6/30) • Glazed Fire (R28S) • Glazed Strawberry (R29S) • Glazed Auburn (R3329S) • Smoked Walnut (R38) • Silver Mist (R56/60)

Heart Throb **NEW**



**Name:** Heart Throb - HTH

**Description:** Ready for your close-up? This easy polished style with barely waved shoulder length hair will ensure you look your best at all times. The lightweight Memory cap II means all day comfort and confidence.

**Cap Type:** Memory Cap II

**Fibre:** Vibralite

**Cap Sizes:** Average

**Length From Crown:** 7"

**Length From Nape:** 5 1/2"

**Length From Side of Head:** 6 1/4"

**Colours:** Glazed Mocha (R11S) • Glazed Hazelnut (R829S) • Chestnut (R10) • Ebony (R2) • Midnight Brown (R4) • Glazed Sand (R1621S) • Golden Wheat (R14/88) • Buttered Toast (R1416T) • Glazed Vanilla (R23S) • Ginger Blonde (R25) • Chocolate Copper (R6/30) • Honey Pecan (R12/26) • Honey Ginger (R14/25) • Glazed Fire (R28S) • Glazed Strawberry (R29S) • Glazed Auburn (R3329S)



## Fanfare

NEW



Copper Mahogany

**Name:** Fanfare - FNF

**Description:** Feel beautifully styled and beautifully you in this classic silhouette which features full precision cut layers on the top and sides that smooth to a neck hugging nape. This style features the luxury monofilament Sheer Indulgence top and a lace front for styling and parting flexibility.

**Cap Type:** Sheer Indulgence lace front monofilament top with Memory Cap II base.

**Fibre:** Tru2life

**Cap Sizes:** Average

**Length From Crown:** 5 1/2"

**Length From Nape:** 2 3/4"

**Length From Side of Head:** 3"

**Colours:** Dark Chocolate (RL6/8) • Sunlit Chestnut (RL10/12) • Hazelnut (RL8/29) • Off Black (RL2/4) • Black Coffee (RL4/6) • Copper Mahogany (RL6/30) • Honey Toast (RL12/16) • Pale Golden Honey (RL16/88) • Biscuit (RL19/23) • Shaded Butterscotch (RL25/27) • Golden Pecan (RL13/88) • Rusty Auburn (RL30/27) • Deepest Ruby (RL33/35) • Fiery Copper (RL31/29) • Cinnabar (RL32/31) • Smoke (RL38) • Silver (RL56/60)

## Easy Going

NEW



Glazed Fire

**Name:** Easy Going - EYG

**Description:** Hair that works overtime means that you can be ready at any time! This full classic short cut is ready to wear with just a shake right out of the box. The Memory Cap II will ensure you feel comfortable and confident all day.

**Cap Type:** Memory Cap II

**Fibre:** Vibralite

**Cap Sizes:** Petite & Average

**Length From Crown:** 5"

**Length From Nape:** 2 3/4"

**Length From Side of Head:** 4"

**Colours:** Glazed Mocha (R11S) • Glazed Hazelnut (R829S) • Chestnut (R10) • Ebony (R2) • Midnight Brown (R4) • Glazed Sand (R1621S) • Golden Wheat (R14/88) • Buttered Toast (R1416T) • Glazed Vanilla (R23S) • Ginger Blonde (R25) • Chocolate Copper (R6/30) • Honey Pecan (R12/26) • Glazed Fire (R28S) • Glazed Strawberry (R29S) • Glazed Auburn (R3329S) • Smoked Walnut (R38) • Silver Mist (R56/60)

Classic Cut

NEW



Hazlenut



**Name:** Classic Cut - CLC

**Description:** Sometimes all you need is a classically cut bob that is loaded with natural movement. With the styleable Tru2life fibre you can wear it as it comes or style with a soft wave.

**Cap Type:** Sheer Indulgence Monofilament Crown, Memory Cap II base.

**Fibre:** Tru2life

**Cap Sizes:** Average

**Length From Crown:** 10 1/4"

**Length From Nape:** 3 1/2"

**Length From Side of Head:** 7"

**Colours:** Dark Chocolate (RL6/8) • Sunlit Chestnut (RL10/12) • Hazlenut (RL8/29) • Off Black (RL2/4) • Black Coffee (RL4/6) • Copper Mahogany (RL6/30) • Honey Toast (RL12/16) • Pale Golden Honey (RL16/88) • Biscuit (RL19/23) • Golden Pecan (RL13/88) • Rusty Auburn (RL30/27) • Golden Russet (RL29/25) • Fiery Copper (RL31/29) • Deepest Ruby (RL33/35) • Cinnabar (RL32/31) • Silver (RL56/60)

Divine



Glazed Hazlenut

**Name:** Divine - DVE

**Description:** An easy to wear short bob that is loaded with natural movement and has long sleek layers in front that are blended to a smooth nape. This outstanding style will stay comfortable all day as it features the Memory Cap II.

**Cap Type:** Memory Cap II

**Fibre:** Vibralite

**Cap Sizes:** Average

**Length From Crown:** 6 1/2"

**Length From Nape:** 2 1/4"

**Length From Side of Head:** 3"

**Colours:** Glazed Mocha (R11S) • Glazed Hazlenut (R829S) • Chestnut (R10) • Ginger Brown (R830) • Ebony (R2) • Midnight Brown (R4) • Glazed Sand (R1621S) • Golden Wheat (R14/88) • Buttered Toast (R1416T) • Glazed Vanilla (R23S) • Ginger Blonde (R25) • Chocolate Copper (R6/30) • Honey Pecan (R12/26) • Honey Ginger (R14/25) • Glazed Fire (R28S) • Glazed Strawberry (R29S) • Glazed Auburn (R3329S) • Smoked Walnut (R38) • Silver Mist (R56/60)

# Finale **NEW**



Ginger Blonde

**Name:** Finale - FIN

**Description:** A chic short wig can be a lifesaver when you're short on time. This short layered page features a lace front for option off the face styling and a monofilament crown for styling versatility.

**Cap Type:** Sheer Indulgence lace front monofilament top with Memory Cap II base.

**Fibre:** Vibralite

**Cap Sizes:** Petite & Average

**Length From Crown:** 5"

**Length From Nape:** 2"

**Length From Side of Head:** 3 1/2"

**Colours:** Glazed Mocha (R11S) • Glazed Hazelnut (R829S) • Chestnut (R10) • Ebony (R2) • Midnight Brown (R4) • Glazed Sand (R1621S) • Golden Wheat (R14/88) • Buttered Toast (R1416T) • Glazed Vanilla (R23S) • Ginger Blonde (R25) • Chocolate Copper (R6/30) • Honey Pecan (R12/26) • Honey Ginger (R14/25) • Glazed Fire (R28S) • Glazed Strawberry (R29S) • Glazed Auburn (R3329S) • Smoked Walnut (R38) • Silver Mist (R56/60)

# Starlight



Glazed Strawberry

**Name:** Starlight - SLT

**Description:** Feel like you're on the Red Carpet with this short asymmetric style that reflects one of the latest A list trends.

**Cap Type:** Memory Cap

**Fibre:** Vibralite

**Cap Sizes:** Average

**Length From Crown:** 6 1/4"

**Length From Nape:** 2 1/4"

**Length From Side of Head:** 2 1/4"

**Colours:** Ebony (R2) • Midnight Brown (R4) • Chocolate Copper (R6/30) • Chestnut (R10) • Glazed Mocha (R11S) • Honey Ginger (R14/25) • Golden Wheat (R14/88) • Ginger Blonde (R25) • Glazed Fire (R28S) • Glazed Strawberry (R29S) • Glazed Sand (R1621S) • Buttered Toast (R1416T) • Glazed Hazelnut (R829S)

## Whisper



Glazed Hazelnut

**Name:** Whisper - WH

**Description:** A barely there boy cut with gently waved layers on top. The Memory Cap ensures that this is a comfortable all day style to wear.

**Cap Type:** Memory Cap

**Fibre:** Vibralite

**Cap Sizes:** Average

**Length From Crown:** 3"

**Length From Nape:** 1 1/2"

**Length From Side of Head:** 2 3/4"

**Colours:** Ebony (R2) • Midnight Brown (R4) • Chocolate Copper (R6/30) • Chestnut (R10) • Glazed Mocha (R11S) • Honey Ginger (R14/25) • Golden Wheat (R14/88) • Ginger Blonde (R25) • Glazed Fire (R28S) • Glazed Strawberry (R29S) • Glazed Sand (R1621S) • Buttered Toast (R1416T) • Glazed Hazelnut (R829S) • Silver Mist (R56/60) • Pearl Platinum (R101)

## Spotlight



Fiery Copper

**Name:** Spotlight - SPLT

**Description:** Loads of very softly waved, long layers fall to you mid back in this feminine cut and the lace front provides the most natural looking hairline ever!

**Cap Type:** Sheer Indulgence lace front monofilament top with Memory Cap II base.

**Fibre:** Tru2life

**Cap Sizes:** Average

**Length From Crown:** 12 1/2"

**Length From Nape:** 12 1/2"

**Length From Side of Head:** 11 1/2"

**Colours:** Golden Walnut (RL11/25) • Dark Chocolate (RL6/8) • Sunlit Chestnut (RL10/12) • Hazelnut (RL8/29) • Off Black (RL2/4) • Black Coffee (RL4/6) • Copper Mahogany (RL6/30) • Honey Toast (RL12/16) • Pale Golden Honey (RL16/88) • Biscuit (RL19/23) • Butterscotch (RL25/27) • Golden Pecan (RL13/88) • Honey Ginger (RL14/25) • Rusty Auburn (RL30/27) • Golden Russet (RL29/25) • Fiery Copper (RL31/29) • Deepest Ruby (RL33/35)

## Winner

Winner has been one of our most popular styles ever. And now it has become even more irresistible with Winner Elite. Featuring the same great cut as Winner, yet with a Sheer Indulgence Lace Front monofilament top and a hand knotted base, this wig now has it all.



**Name:** Winner - WNR

**Description:** The classic and best selling light little pixie featuring the Comfort Cap II. Ready to wear right out of the box- all it needs is a shake and you are ready to go!

**Cap Type:** Memory Cap II

**Fibre:** Vibralite

**Cap Sizes:** Average

**Length From Crown:** 2 3/4"

**Length From Nape:** 1 3/4"

**Length From Side of Head:** 2 1/2"

**Colours:** Glazed Mocha (R11S) • Glazed Hazelnut (R829S) • Chestnut (R10) • Ginger Brown (R830) • Ebony (R2) • Midnight Brown (R4) • Glazed Sand (R1621S) • Golden Wheat (R14/88) • Buttered Toast (R1416T) • Glazed Vanilla (R23S) • Ginger Blonde (R25) • Chocolate Copper (R6/30) • Honey Pecan (R12/26) • Honey Ginger (R14/25) • Glazed Fire (R28S) • Glazed Strawberry (R29S) • Glazed Auburn (R3329S) • Smoked Walnut (R38) • Silver Mist (R56/60)

## Winner Elite

**NEW**



**Name:** Winner Elite - ELT

**Description:** One of our most popular styles gets even more Luxe; even more irresistible.

**Cap Type:** Sheer Indulgence Lace Front Monofilament Top Hand knotted base.

**Fibre:** Vibralite

**Cap Sizes:** Average

**Length From Crown:** 2 3/4"

**Length From Nape:** 1 3/4"

**Length From Side of Head:** 2 1/2"

**Colours:** Glazed Mocha (R11S) • Glazed Hazelnut (R829S) • Chestnut (R10) • Midnight Brown (R4) • Glazed Sand (R1621S) • Golden Wheat (R14/88) • Glazed Vanilla (R23S) • Chocolate Copper (R6/30) • Honey Pecan (R12/26) • Glazed Strawberry (R29S) • Smoked Walnut (R38) • Silver Mist (R56/60)

## Always



Rusty Auburn

**Name:** Always - ALW

**Description:** Long and luxurious layers and a side sweeping fringe ensure that this beautiful style will ALWAYS look great. The Tru2life fibre can be gently heat styled for your own personal look.

**Cap Type:** Memory Cap II

**Fibre:** Tru2life

**Cap Sizes:** Average

**Length From Crown:** 9 1/2"

**Length From Nape:** 8"

**Length From Side of Head:** 13"

**Colours:** Golden Walnut (RL11/25) • Dark Chocolate (RL6/8) • Sunlit Chestnut (RL10/12) • Hazelnut (RL8/29) • Off Black (RL2/4) • Black Coffee (RL4/6) • Copper Mahogany (RL6/30) • Honey Toast (RL12/16) • Pale Golden Honey (RL16/88) • Biscuit (RL19/23) • Butterscotch (RL25/27) • Golden Pecan (RL13/88) • Rusty Auburn (RL30/27) • Golden Russet (RL29/25) • Fiery Copper (RL31/29) • Deepest Ruby (RL33/35)

## Breeze

**Name:** Breeze - BRZ

**Description:** Flipped and textured layers make this as easy as a Breeze to wear, with the Memory cap providing all day comfort.

**Cap Type:** Memory Cap

**Fibre:** Vibralite

**Cap Sizes:** Average

**Length From Crown:** 5 1/2"

**Length From Nape:** 5 1/4"

**Length From Side of Head:** 5"

**Colours:** Midnight Brown (R4) • Glazed Mocha (R11S) • Chestnut (R10) • Honey Ginger (R14/25) • Glazed Apricot (R2026) • Glazed Sand (R1621S) • Golden Wheat (R14/88) • Ginger Blonde (R25) • Chocolate Copper (R6/30) • Honey Pecan (R12/26) • Auburn Mist (R3027) • Glazed Fire (R28S) • Glazed Strawberry (R29S) • Glazed Hazelnut (R829S) • Ginger Brown (R830)



Glazed Hazelnut

## Cinch



Glazed Strawberry

**Name:** Cinch - CNH

**Description:** This fashionable asymmetric boy cut is ready to wear right out of the box with just a shake. So you're ready to go in no time!

**Cap Type:** Memory Cap II

**Fibre:** Vibralite

**Cap Sizes:** Average

**Length From Crown:** 4"

**Length From Nape:** 2"

**Length From Side of Head:** 3"

**Colours:** Glazed Mocha (R11S) • Glazed Hazelnut (R829S) • Chestnut (R10) • Ebony (R2) • Midnight Brown (R4) • Glazed Sand (R1621S) • Golden Wheat (R14/88) • Buttered Toast (R1416T) • Glazed Vanilla (R23S) • Ginger Blonde (R25) • Chocolate Copper (R6/30) • Honey Ginger (R14/25) • Glazed Fire (R28S) • Glazed Strawberry (R29S) • Glazed Auburn (R3329S) • Smoked Walnut (R38) • Silver Mist (R56/60)

## Tres Chic

**Name:** Tres Chic - TC

**Description:** A gorgeous long layered top with a side swept fringe make this cropped style very chic indeed. The Memory Cap II will ensure you feel as good as you look all day.

**Cap Type:** Memory Cap II

**Fibre:** Vibralite

**Cap Sizes:** Average

**Length From Crown:** 6 1/2"

**Length From Nape:** 1 3/4"

**Length From Side of Head:** 2 1/4"

**Colours:** Glazed Mocha (R11S) • Glazed Hazelnut (R829S) • Chestnut (R10) • Ginger Brown (R830) • Ebony (R2) • Midnight Brown (R4) • Glazed Sand (R1621S) • Golden Wheat (R14/88) • Buttered Toast (R1416T) • Glazed Vanilla (R23S) • Ginger Blonde (R25) • Chocolate Copper (R6/30) • Honey Pecan (R12/26) • Honey Ginger (R14/25) • Glazed Fire (R28S) • Glazed Strawberry (R29S) • Glazed Auburn (R3329S) • Smoked Walnut (R38) • Silver Mist (R56/60)



Glazed Fire

## Tango



Glazed Fire

**Name:** Tango - TAN

**Description:** Short all over layers and plenty of body make this an easy to wear yet exotic style. The Sheer Indulgence monofilament top ensures the most natural look whilst the Memory Cap provides all day comfort.

**Cap Type:** Sheer Indulgence Monofilament top Memory Cap II base.

**Fibre:** Vibralite

**Cap Sizes:** Petite

**Length From Crown:** 4 1/2"

**Length From Nape:** 4 1/2"

**Length From Side of Head:** 4 1/4"

**Colours:** Midnight Brown (R4) • Chocolate Copper (R6/30) • Chestnut (R10) • Glazed Mocha (R11S) • Honey Pecan (R12/26) • Honey Ginger (R14/25) • Golden Wheat (R14/88) • Ginger Blonde (R25) • Glazed Fire (R28S) • Glazed Strawberry (R29S) • Auburn Mist (R3027) • Smoked Walnut (R38) • Glazed Hazelnut (R829S) • Ginger Brown (R830) • Buttered Toast (R1416T) • Glazed Sand (R1621S) • Glazed Apricot (R2026)

## Enchant

**Name:** Enchant - ECH

**Description:** A truly enchanting classic cut. Style straight or softly waved with the Tru2life fibre.

**Cap Type:** Memory Cap II

**Fibre:** Vibralite

**Cap Sizes:** Average

**Length From Crown:** 5 1/4"

**Length From Nape:** 2 1/2"

**Length From Side of Head:** 3"

**Colours:** Golden Walnut (RL11/25) • Dark Chocolate (RL6/8) • Sunlit Chestnut (RL10/12) • Hazelnut (RL8/29) • Off Black (RL2/4) • Black Coffee (RL4/6) • Copper Mahogany (RL6/30) • Honey Toast (RL12/16) • Pale Golden Honey (RL16/88) • Biscuit (RL19/23) • Butterscotch (RL25/27) • Golden Pecan (RL13/88) • Rusty Auburn (RL30/27) • Golden Russet (RL29/25) • Fiery Copper (RL31/29) • Deepest Ruby (RL33/35) • Smoke (RL38) • Silver (RL56/60)



Glazed Hazelnut



**Name:** Dixie Pixie - DP

**Description:** The cutest barely there Pixie crop around. This one has a monofilament crown for a natural look and the Memory Cap II base for a comfortable fit.

**Cap Type:** Sheer Indulgence Monofilament top, Memory Cap II.

**Fibre:** Vibralite

**Cap Sizes:** Average

**Length From Crown:** 3"

**Length From Nape:** 1 1/2"

**Length From Side of Head:** 1 1/2"

**Colours:** Midnight Brown (R4) • Glazed Mocha (R11S) • Chocolate Copper (R6/30) • Honey Pecan (R12/26) • Honey Ginger (R14/25) • Golden Wheat (R14/88) • Glazed Vanilla (R23S) • Ginger Blonde (R25) • Glazed Strawberry (R29S) • Auburn Mist (R3027) • Silver Mist (R56/60) • Glazed Sand ( R 1621S)



**Name:** Excite - EX

**Description:** An updated classic boy cut with long straight layers in the front and a blended nape. The Sheer Indulgence monofilament top ensures the most natural look with the Memory Cap II base provides comfort.

**Cap Type:** Sheer Indulgence Monofilament top, Memory Cap II.

**Fibre:** Vibralite

**Cap Sizes:** Average

**Length From Crown:** 6"

**Length From Nape:** 2"

**Length From Side of Head:** 2 1/2"

**Colours:** Midnight Brown (R4) • Glazed Mocha (R11S) • Glazed Hazelnut (R829S) • Chestnut (R10) • Ginger Blonde (R25) • Ginger Brown (R830) • Glazed Apricot (R2026) • Glazed Sand (R1621S) • Buttered Toast (R1416T) • Glazed Vanilla (R23S) • Honey Pecan (R12/26) • Auburn Mist (R3027) • Honey Ginger (R14/25) • Golden Wheat (R14/88) • Glazed Fire (R28S) • Smoked Walnut (R38) • Silver Mist (R56/60) • Glazed Strawberry (R29S) • Chocolate Copper ( R6/30)

**Name:** Wildfire - WF

**Description:** A sharp looking, barely-there pixie style featuring razor-cut layers and a wispy fringe. Easy-to-style, easy-to-wear but nothing short of a salon-styled look!

**Cap Type:** Memory Cap II

**Fibre:** Vibralite

**Cap Sizes:** Petite & Average

**Length From Crown:** 2"

**Length From Nape:** 1"

**Length From Side of Head:** 2"

**Colours:** Glazed Apricot (R2026) • Midnight Brown (R4) • Chocolate Copper (R6/30) • Chestnut (R10) • Glazed Mocha (R11S) • Honey Pecan (R12/26) • Golden Wheat (R14/88) • Glazed Fire (R28S) • Glazed Strawberry (R29S) • Auburn Mist (R3027) • Silver Mist (R56/60) • Dark Copper (R130) • Glazed Hazelnut (R829S) • Buttered Toast (R1416T) • Glazed Sand (R1621S)



**Name:** Human Hair Extensions 18" - RL final HHE18

**Description:** 10 pieces of the finest quality human hair. Totally natural and absolutely gorgeous. Easy to use, lightweight and incredibly versatile, these will help you create all types of hairstyles.

**Cap Type:** Clip In Extensions

**Fibre:** 100% Fine Human Hair

**Cap Sizes:** All 18" long

4 pieces 11 1/2" wide / 2 pieces 6" wide  
1 piece 7" wide / 1 piece 8" wide / 2 pieces 1" wide

**Colours:** Black (R1HH) • Dark Brown (R3HH) • Chestnut Brown (R4HH) • Chocolate Copper (R6/30H) • Palest Blonde (R10HH) • Golden Wheat (R14/88) • Buttered Toast (R1416T) • Ginger Blonde (R25)





## Relentless

**Name:** Relentless - RL

**Description:** Super straight layers make this long style sleek and chic. The Sheer Indulgence monofilament part ensures the most natural look whilst the Memory Cap provides all day comfort.

**Cap Type:** Sheer Indulgence Monofilament part Memory Cap II base.

**Cap Sizes:** Average

**Length From Crown:** 12"

**Length From Nape:** 13"

**Length From Side of Head:** 11 1/2"

**Colours:** Glazed Mocha (R11S) • Glazed Hazelnut (R829S) • Chestnut (R10) • Midnight Brown (R4) • Glazed Sand (R1621S) • Golden Wheat (R14/88) • Ginger Blonde (R25) • Chocolate Copper (R6/30) • Honey Ginger (R14/25) • Glazed Strawberry (R29S) • Buttered Toast (R1416T) • Glazed Vanilla (R23S) • Glazed Fire(R28S)



Glazed Fire

## Infatuation



Glazed Auburn

**Name:** Infatuation - IF

**Description:** Get noticed with this gorgeous shoulder skimming style. Razored long layers and a razor tapered fringe will frame your face to perfection and the Sheer Indulgence monofilament top will give you parting flexibility with the most natural look.

**Cap Type:** Sheer Indulgence Monofilament Top Memory Cap Base.

**Fibre:** Vibralite

**Cap Sizes:** Average

**Length From Crown:** 8"

**Length From Nape:** 7"

**Length From Side of Head:** 7"

**Colours:** Glazed Mocha (R11S) • Glazed Hazelnut (R829S) • Midnight Brown (R4) • Chestnut (R10) • Glazed Apricot (R2026) • Glazed Sand (R1621S) • Golden Wheat (R14/88) • Ginger Blonde (R25) • Chocolate Copper (R6/30) • Honey Pecan (R12/26) • Honey Ginger (R14/25) • Glazed Fire(R28S) • Glazed Strawberry (R29S) • Glazed Auburn (R3329S) • Buttered Toast (R1416)

## Power

**Name:** Power - POW

**Description:** This spiky crop has plenty of attitude and boldness yet is comfortable and easy to wear.

**Cap Type:** Memory Cap

**Fibre:** Vibralite

**Cap Sizes:** Petite

**Length From Crown:** 2 1/2"

**Length From Nape:** 1 1/2"

**Length From Side of Head:** 1 1/2"

**Colours:** Midnight Brown (R4) • Chocolate Copper (R6/30) • Chestnut (R10) • Glazed Mocha (R11S) • Honey Pecan (R12/26) • Honey Ginger (R14/25) • Golden Wheat (R14/88) • Glazed Vanilla (R23S) • Ginger Blonde (R25) • Glazed Fire (R28S) • Glazed Strawberry (R29S) • Auburn Mist (R3027) • Smoked Walnut (R38) • Silver Mist (R56/60) • Dark Copper (R130) • Glazed Hazelnut (R829S) • Ginger Brown (R830) • Glazed Sand (R1621S) • Glazed Apricot (R2026)



Glazed Fire

# Classic Cuts

Timeless, Elegant, Perfect.  
Some styles will never date.

Leila

**NEW**



**Name:** Leila - LEI

**Description:** A stunning, ready to wear, short style wig featuring all-over textured layers and intense volume at the crown.

**Cap Type:** Comfort Cap

**Cap Sizes:** Average

**Length From Crown:** 3 1/4"  
**Length From Nape:** 2 1/4"  
**Length From Side of Head:** 2 1/2"

**Colours:** Almond Mist (G14+) • Honey Mist (G16+) • Praline Mist (G19+) • Wheat Mist (G20+) • Cappuccino Mist (G13+) • Cayenne Mist (G29+) • Nutmeg Mist (G10+) • Pecan Mist (G12+) • Platinum Mist (G101+) • Burnished Snow (G60+) • Sugared Walnut (G38+) • Sugared Silver (G56+) • Coffee Mist (G6+)

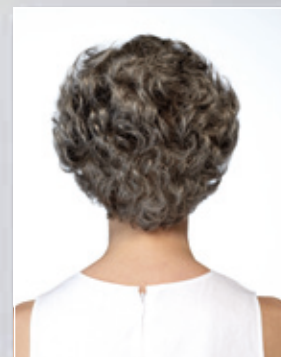
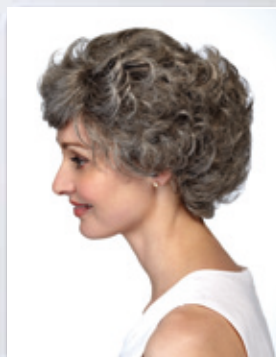
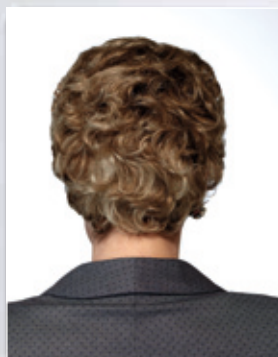


Almond Mist

## Jane



## Elegance



**Name:** Jane - ZJA

**Description:** Voluminous, lightly waved, bouncy layers characterise Jane- a comfortable, lightweight wig which is perfect for anyone seeking both comfort and style.

**Cap Type:** Comfort Cap

**Cap Sizes:** Average & Petite

**Length From Crown:** 3"

**Length From Nape:** 2 1/2"

**Length From Side of Head:** 3"

**Colours:** Sahara (1822) • Brazil Nut (8) • Pecan (12) • Ash Brown (14) • Honey Blonde (16) • Frosted Pearl (17/101) • Mink (38) • Granite (44) • Silver Mink (48) • Sandy Pearl (49) • Pewter (51) • Platinum Grey (56) • Snow White (60) • Pearl (101)

**Name:** Elegance - ELE

**Description:** A classic short wig style featuring short, wavy layers, a soft fringe and longer layers at the sides of the ears.

**Cap Type:** Handtied Cap

**Cap Sizes:** Average

**Length From Crown:** 3"

**Length From Nape:** 2"

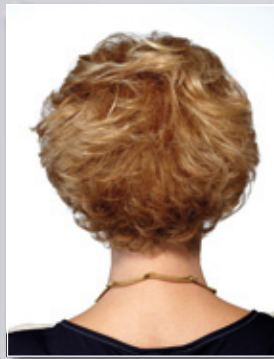
**Length From Side of Head:** 4"

**Colours:** Platinum Grey (JR56) • Brazil Nut (JR8) • Walnut (JR10) • Pecan (JR12) • Ash Brown (14) • Ash Brown (JR14) • Wheat (JR24L) • Honey Red (JR502) • Mink (JR38) • Silver Mink (JR48) • Snow White (60) • Snow White (JR60) • Pearl (JR101C) • Frosted Pearl (17/101) • Honey Red (JR502+) • Sahara (1822)

## Commitment



Buttered Toast Mist



**Name:** Commitment - CMT

**Description:** A short, feathered wig style with plenty of all-over volume and a beautifully natural looking fringe defines Commitment- a style which is suitable for both daytime and evening wear.

**Cap Type:** Comfort Cap

**Cap Sizes:** Average

**Length From Crown:** 4 1/4"

**Length From Nape:** 2 1/4"

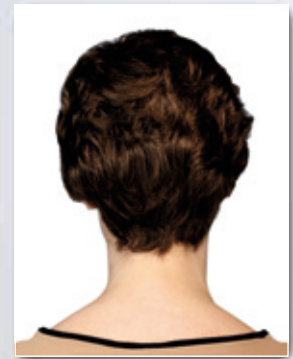
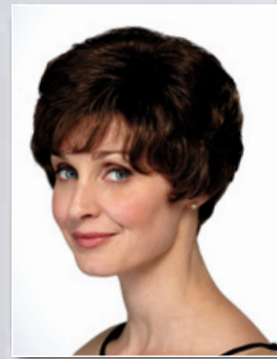
**Length From Side of Head:** 3 3/4"

**Colours:** Buttered Toast Mist (G15+) • Midnight Brown (L4) • Chocolate Copper (L630) • Walnut Mist (48C) • Silver Mist (56/60C) • Ginger Brown (LG830) • Buttered Toast (LR1416) • Cappuccino Mist (G13+) • Wheat Mist (G20+) • Butterscotch Mist (G25+) • Ginger Mist (G27+) • Sugared Almond (G58+) • Dark Copper Mist (130+) • Coffee Mist (G6+) • Nutmeg Mist (G10+)

## Spring



Walnut



**Name:** Spring - ZNo8

**Description:** A classic short style featuring voluminous layers and a face-framing fringe makes this wig one which is sure to put a spring in your step!

**Cap Type:** Comfort Cap

**Cap Sizes:** Average

**Length From Crown:** 2 1/2"

**Length From Nape:** 1"

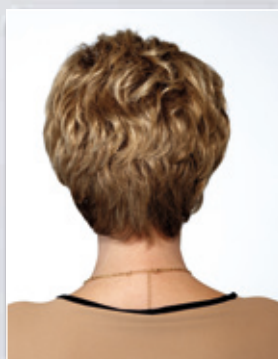
**Length From Side of Head:** 1"

**Colours:** Walnut(JR10) • Dark Chocolate (JR6) • Brazil Nut (JR8) • Pecan (JR12) • Ash Brown (JR14) • Wheat(JR24L) • Honey Red (JR502+) • Silver Mink (JR48) • Pewter (JR51) • Platinum Grey (JR56) • Snow White (JR60) • Sahara (18/22) • Frosted Pearl (17/101) • Pearl (JR101C)

Corinne **NEW**



Almond Mist



**Name:** Corinne - CRNE

**Description:** A classic short cut wig style featuring plenty of all-over volume and expertly cut layers. The result is a chic, stunning and head turning silhouette.

**Cap Type:** Comfort Cap

**Cap Sizes:** Average

**Length From Crown:** 4"

**Length From Nape:** 2"

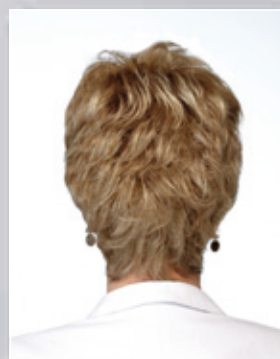
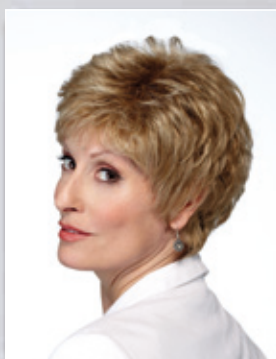
**Length From Side of Head:** 3"

**Colours:** Almond Mist (G14+) • Honey Mist (G16+) • Praline Mist (G19+) • Wheat Mist (G20+) • Cappuccino Mist (G13+) • Cayenne Mist (G29+) • Nutmeg Mist (G10+) • Pecan Mist (G12+) • Platinum Mist (G101+) • Sugared Walnut (G38+) • Burnished Snow (G60+) • Coffee Mist (G6+) • Sugared Silver (G56+)

Flora **NEW**



Praline Mist



**Name:** Flora - FLA

**Description:** A multitude of wispy layers, maximum height at the crown and soft, face-framing layers at the sides define Flora, an easy-to-wear, cropped style which is suitable for both casual and formal wear.

**Cap Type:** Comfort Cap

**Cap Sizes:** Petite

**Length From Crown:** 3"

**Length From Nape:** 1 1/2"

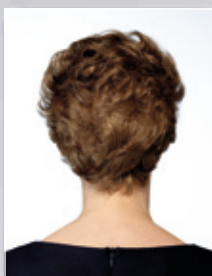
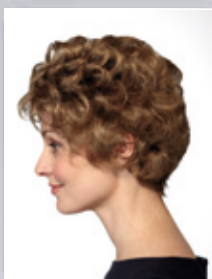
**Length From Side of Head:** 2 1/4"

**Colours:** Coffee Mist (G6+) • Nutmeg Mist (G10+) • Pecan Mist (G12+) • Cappuccino Mist (G13+) • Almond Mist (G14+) • Honey Mist (G16+) • Praline Mist (G19+) • Wheat Mist (G20+) • Ginger Mist (G27+) • Burnished Snow (G60+) • Platinum Mist (G101+)

## Coral



Ash Brown



**Name:** Coral - COR

**Description:** A timeless, full-bodied style with plenty of light waves and a voluminous crown defines Coral- a must have short wig which is perfect for everyday wear.

**Cap Type:** Monofilament top with Comfort Cap base.

**Cap Sizes:** Average

**Length From Crown:** 3"  
**Length From Nape:** 1 1/2"  
**Length From Side of Head:** 2"

**Colours:** Ash Brown (14) • Dark Chocolate (6) • Brazil Nut (8) • Pecan (12) • Honey Blonde (16) • Frosted Pearl (17/101) • Sahara (1822) • Mink (38) • Silver Mink (48) • Pewter (51) • Platinum Grey (56) • Snow White (60)

## Brooke

**Name:** Brooke - BRK

**Description:** A long layered bob wig featuring a face-framing fringe and softly cut layers makes Brooke an elegant, timeless and fuss-free style which never disappoints!

**Cap Type:** Handtied Cap

**Cap Sizes:** Average

**Length From Crown:** 3 1/4" - 9"  
**Length From Nape:** 5 1/2"  
**Length From Side of Head:** 6"

**Colours:** Golden Wheat (1488) • Harvest Gold (HG) • Midnight (1B) • Cappuccino (4) • Brazil Nut (8) • Pecan (12) • Ash Brown (14) • Soft Mahogany (SF6/130) • Golden Lights (SF613/14) • Shaded Blonde (JS124)

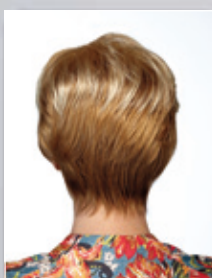


Golden Wheat

## Concept



Buttered Toast Mist



**Name:** Concept - CPT

**Description:** A short, volume-rich hairstyle with choppy layers at the crown which blend into a neat, tapered neck to create a fitted and classy look.

**Cap Type:** Comfort Cap

**Cap Sizes:** Average

**Length From Crown:** 3.5" - 4"  
**Length From Nape:** 1.5"  
**Length From Side of Head:** 2.5"

**Colours:** Silver Mist (56/60C) • Ginger Brown (LG830) • Buttered Toast (LR1416) • Buttered Toast Mist (G15+) • Wheat Mist (G20+) • Butterscotch Mist (G25+) • Dark Copper Mist (130+) • Cappuccino Mist (G13+) • Chianti Mist (G135+) • Nutmeg Mist (G10+) • Sugared Charcoal (511C)

## Short Cut

**Name:** Short Cut - ZN27

**Description:** A classy, close to the head style featuring lots of short, choppy layers and a face-framing fringe makes Short Cut the perfect wig for both day and night.

**Cap Type:** Comfort Cap

**Cap Sizes:** Average

**Length From Crown:** 2 1/4" - 2 3/4"

**Length From Nape:** 1 3/4"

**Length From Side of Head:** 2 3/4"

**Colours:** Butterscotch (1627) • Midnight (1B) • Ebony (2) • Dark Chocolate (JR6) • Brazil Nut (JR 8) • Walnut (JR10) • Pecan (JR12) • Ash Brown (JR14) • Frosted Pearl (17/101) • Sahara (1822) • Wheat (JR24L) • Swedish Blonde (JR21) • Copper (JR27) • Mahogany (JR30) • Onyx Grey (JR36) • Mink (JR38) • Silver Mink (JR48) • Pewter (JR51) • Platinum Grey (JR56) • Snow White (JR60) • Platinum (100) • Pearl (JR101C) • Shaded Blonde (JS124) • Buttered Toast (504+) • Honey Red (JR502+) • Golden Walnut (1416)



Butterscotch

## Vernice

**Name:** Vernice - VER

**Description:** Incredibly voluminous, choppy layers and a feather-light fringe make Vernice a simple but stunning wig style which is as comfortable as it is stylish.

**Cap Type:** Comfort Cap

**Cap Sizes:** Petite

**Length From Crown:** 2" - 4"

**Length From Nape:** 2 3/4"

**Length From Side of Head:** 2 3/4"

**Colours:** Buttered Toast (R1416T) • Midnight Brown (R4) • Chocolate Copper (R6/30) • Ginger Brown (R830) • Golden Wheat (R14/88) • Honey Ginger (R14/25) • Glazed Strawberry (R29S) • Glazed Hazelnut (R829S) • Glazed Sand (R1621S) • Silver Mist (R56/60) • Glazed Mocha (R11S) • Swedish Blonde (R22) • Chestnut (R10)

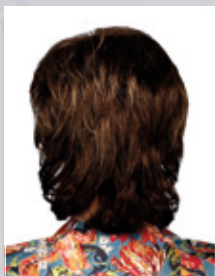


Buttered Toast

## Spellbound



Nutmeg Mist



**Name:** Spellbound - SPB

**Description:** Spellbound is a head-turning wig featuring choppy, all-over layers which are textured to create natural movement and bounce. The longer sections of hair at the neck provide maximum coverage and create a beautiful, elegant silhouette.

**Cap Type:** Comfort Cap

**Cap Sizes:** Average

**Length From Crown:** 5"  
**Length From Nape:** 4 1/2"  
**Length From Side of Head:** 5"

**Colours:** Nutmeg Mist (G10+) • Coffee Mist (G6+) • Chocolate Copper (L6/30) • Ginger Brown (LG830) • Buttered Toast (LR1416) • Cappuccino Mist (G13+) • Buttered Toast Mist (G15+) • Wheat Mist (G20+) • Butterscotch Mist (G25+) • Ginger Mist (G27+) • Sugared Almond (G58+) • Dark Copper Mist (130+) • Chianti Mist (G135+) • Sugared Charcoal (511C)

## Claire

**Name:** Claire - CL

**Description:** A fuss-free, super-comfortable style which is easy to style and a delight to wear makes Claire the ultimate short cut wig which will add definition and volume in an instant.

**Cap Type:** Comfort Cap

**Cap Sizes:** Average

**Length From Crown:** 3"  
**Length From Nape:** 2 1/4"  
**Length From Side of Head:** 2 1/4"

**Colours:** Sahara (1822) • Brazil Nut (8) • Pecan (12) • Honey Blonde (16) • Ash Brown (14) • Frosted Pearl (17/101) • Chardonnay (22) • Onyx Grey (36) • Mink (38) • Silver Mink (48) • Pewter (51) • Snow White (60) • Platinum Grey (56)



Sahara

## Ruby



Soft Wheat

**Name:** Ruby - RU (P) AND RUBA (AV)

**Description:** A classic short style which comes ready-to-wear, Ruby features a side-swept fringe that can be worn brushed forwards to eyebrow level or swept to the side. This, combined with all-over choppy layers, make it a firm favourite for anyone seeking a comfortable, lightweight style which is simple yet elegant.

**Cap Type:** Comfort Cap

**Cap Sizes:** Average & Petite

**Length From Crown:** 2 1/2 - 3 1/2"  
**Length From Nape:** 2"  
**Length From Side of Head:** 2 1/2"

**Colours:** Soft Wheat (SF23/20) • Dark Walnut (1B/8) • Soft Mahogany (SF6/130) • Golden Wheat (1488) • Soft Honey (SF12/28) • Golden Lights (SF613/14) • Soft White Mink (SF38/56) • Soft Silvery Moon (SF51/60) • Soft Glazed Honey (SF13/16) • Soft Buttered Toast (SF10/26)



## Kim

**Name:** Kim - KI & KIP

**Description:** A beautiful cropped style wig with short layers and a subtle fringe makes Kim the ultimate in fuss-free styling.

**Cap Type:** Comfort Cap

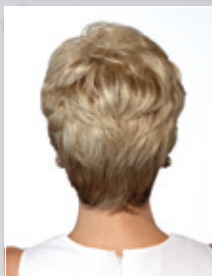
**Cap Sizes:** Petite & Petite Petite\*

**Length From Crown:** 2 3/4" - 4"

**Length From Nape:** 2 1/4"

**Length From Side of Head:** 2 3/4"

**Colours:** Wheat (23/20) • Dark Strawberry\* (33/29) • Dark Walnut (1B/8) • Nut Brown\* (4/8) • Brazil Nut (8) • Buttered Toast (10/26) • Pecan (12) • Honey (12/28) • Ash Brown (14) • Honey Blonde (16) • Frosted Pearl (17/101) • Sahara (1822) • Chardonnay (22) • Copper\* (27) • Copper\* (33/29) • Flame\* (33/24) • Mink (38) • Silver Mink (48) • Pewter (51) • Platinum Grey (56) • Shaded Blonde (JS124) • Golden Lights (613/14)

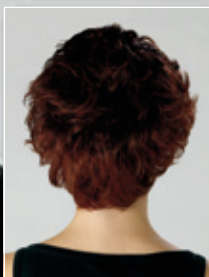


Wheat

## Sue



Auburn Mist



**Name:** Sue - SUE

**Description:** A sweet, sassy and modern wig- Sue features expertly cut, voluminous layers and a fringe which can be brushed forwards or worn to the side.

**Cap Type:** Monofilament top with Comfort Cap base.

**Cap Sizes:** Average

**Length From Crown:** 1 3/4" - 4"

**Length From Nape:** 2 3/4"

**Length From Side of Head:** 3 1/4"

**Colours:** Auburn Mist (R30/27H) • Midnight Brown (R4) • Chocolate Copper (R6/30) • Glazed Sand (R1621S) • Glazed Mocha (R11S) • Golden Wheat (R14/88) • Buttered Toast (R1416T) • Ginger Brown (R830) • Smoked Walnut (R38) • Walnut Mist (R48) • Silver Mist (R56/60) • Glazed Hazelnut (R829S)

## Pearl

**Name:** Pearl - PE

**Description:** The perfect short cut wig featuring lots of soft layers and a light fringe. Pearl is easy to style, incredibly comfortable to wear and flattering for a range of face-shapes.

**Cap Type:** Monofilament with Comfort Cap Base

**Cap Sizes:** Average

**Length From Crown:** 1 1/2"

**Length From Nape:** 4"

**Length From Side of Head:** 3"

**Colours:** Mink (38) • Cappuccino (4) • Dark Chocolate (6) • Brazil Nut (8) • Pecan (12) • Ash Brown (14) • Sahara (1822) • Silver Mink (48) • Platinum Grey (56) • Frosted Pearl (17/101)



Mink

## Erica



Chardonnay

**Name:** Erica - ER

**Description:** A short wig with soft and gentle layers and a fringe which can be brushed forward or to the side make Erica the ultimate wig for easy, fuss-free styling.

**Cap Type:** Comfort Cap

**Cap Sizes:** Average

**Length From Crown:** 1 1/2"

**Length From Nape:** 4"

**Length From Side of Head:** 4"

**Colours:** Chardonnay (22) • Brazil Nut (8) • Pecan (12) • Ash Brown (14) • Honey Blonde (16) • Sahara (1822) • Frosted Pearl (17/101) • Copper (27) • Granite (44) • Platinum Grey (56)

## Something Special

**Name:** Something Special - ZN29

**Description:** A short cut style featuring lots of expertly cut layers and volume at the crown make this wig something special! Comfortable to wear and easy to style- simply rake through with the fingers to accentuate the layers or comb for a sleeker look.

**Cap Type:** Comfort Cap

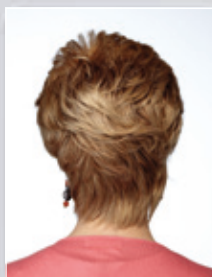
**Cap Sizes:** Average

**Length From Crown:** 2 3/4 - 3 3/4"

**Length From Nape:** 2 3/4"

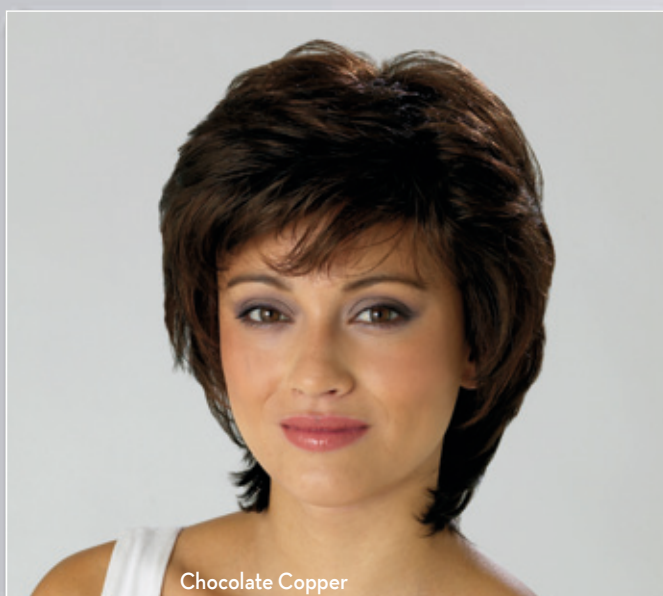
**Length From Side of Head:** 3 1/4"

**Colours:** Honey Red (JR502+) • Ebony (2) • Dark Chocolate (JR6) • Brazil Nut (JR8) • Walnut (JR10) • Pecan (JR12) • Ash Brown (JR14) • Sahara (1822) • Swedish Blonde (JR21) • Copper (JR27) • Wheat (JR24L) • Mahogany (JR30) • Bordeaux (JR33) • Mink (38) • Silver Mink (48) • Platinum Grey (JR56) • Platinum (100) • Shaded Blonde (JS124) • Flame (JR130) • Buttered Toast (504+) • Shaded Wheat (1424) • Barleycorn (1426RC) • Butterscotch (1627)



Honey Red

## Gloria



Chocolate Copper

**Name:** Gloria - GLR

**Description:** A beautifully feminine wig with all-over layers which skim the neck to create a soft bounce. Slightly longer layers at the neck and around the ears frame the face and produce a polished and stylish look which is wearable for all age-groups.

**Cap Type:** Comfort Cap

**Cap Sizes:** Average

**Length From Crown:** 3 1/4 - 4 3/4"

**Length From Nape:** 4 3/4"

**Length From Side of Head:** 3 1/4"

**Colours:** Chocolate Copper (R6/30) • Midnight Brown (R4) • Ginger Brown (R830) • Golden Wheat (R14/88) • Honey Ginger (R14/25) • Buttered Toast (R1416T) • Butterscotch Blonde (R1627) • Swedish Blonde (R22) • Glazed Sand (R1621S) • Glazed Mocha (R11S) • Chestnut (R10)

# Kira

**Name:** Kira - KIR

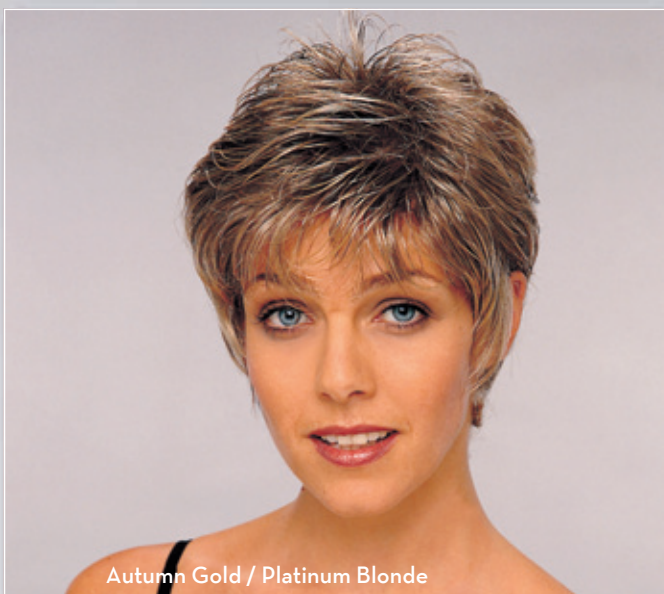
**Description:** An incredibly lightweight wig style featuring slightly razor-cut layers and a wispy fringe which can be brushed forwards or to the side.

**Cap Type:** Monofilament top with Comfort Cap base

**Cap Sizes:** Petite

**Length From Crown:** 2"  
**Length From Nape:** 4"  
**Length From Side of Head:** 4"

**Colours:** Autumn Gold/Platinum Blonde (AG/PB) • Cinnamon/Spring Honey (C/SH) • Dark Choc/Henna Red (DC/HR) • Dark Rust/Cotton Blonde (DR/C) • Golden Brown/Irish Red (GB/IR) • Light Chocolate/Candy Blonde (LC/CB) • Midnight Brown/Dark Choc (4/6) • Platinum White (56/60) • Smoked Walnut/Silver Mist (SW/SM) • Sunset Brown/Candy Blonde (SB/CB) • Swedish Blonde (SB) • Dark Chocolate / Honey Red (DC/HONR) • Silver Pewter (51/56)

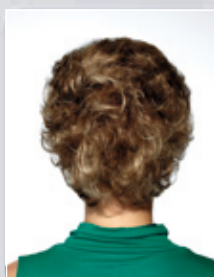


Autumn Gold / Platinum Blonde

# Vicky



Sahara



**Name:** Vicky - VIC

**Description:** An easy to wear, care-free wig style featuring lots of beautifully cut, choppy layers. Simply rake through with the fingers to accentuate the layers or brush flat for a sleek, polished look.

**Cap Type:** Comfort Cap

**Cap Sizes:** Average

**Length From Crown:** 3 3/4"  
**Length From Nape:** 3 1/4"  
**Length From Side of Head:** 3 3/4"

**Colours:** Sahara (1822) • Dark Chocolate (6) • Brazil Nut (8) • Pecan (12) • Ash Brown (14) • Honey Blonde (16) • Frosted Pearl (17/101) • Mink (38) • Silver Mink (48) • Platinum Grey (56)

# Definitely

**Name:** Definitely - WDEF

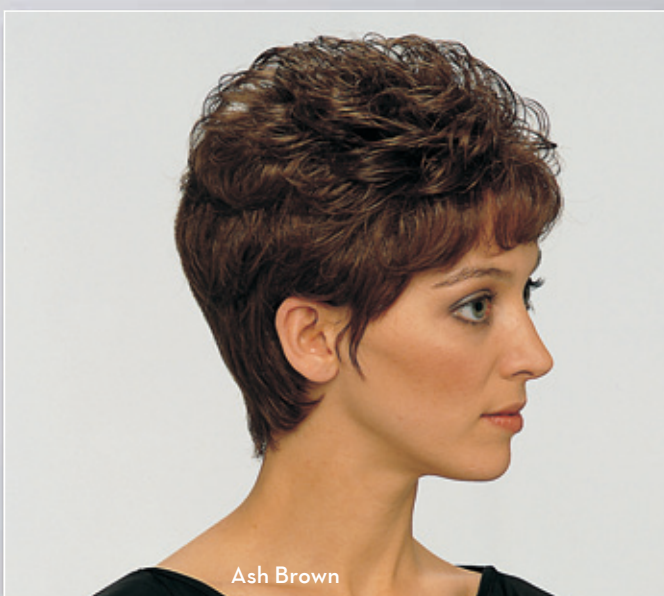
**Description:** Definitely features a nape-hugging neck and a beautifully arranged circle of curls at the crown. Easy to style and incredibly comfortable for all day wear, this is a style which ticks all the boxes.

**Cap Type:** Comfort Cap

**Cap Sizes:** Average

**Length From Crown:** 2 3/4" - 3 1/4"  
**Length From Nape:** 1 3/4"  
**Length From Side of Head:** 2 3/4"

**Colours:** Ash Brown (JR14) • Dark Chocolate (6) • Brazil Nut (8) • Soft Mocha (11) • Caramel (12/16) • Honey Blonde (16) • Sahara (1822) • Chardonnay (22) • Mink (38) • Silver Brazil (40) • Silvered Brown (47) • Pewter (51) • Platinum Grey (56) • Snow White (60) • Platinum White (56/60) • Pearl (101)



Ash Brown

## Diana



Honey Red

**Name:** Diana - ZN20

**Description:** Diana is a classic, short style wig featuring all-over voluminous waves and a soft fringe. Plenty of layers at the crown create lots of natural movement and create a slightly curved silhouette.

**Cap Type:** Comfort Cap

**Cap Sizes:** Average

**Length From Crown:** 4"

**Length From Nape:** 3 1/2"

**Length From Side of Head:** 4"

**Colours:** Honey Red (JR502+) • Ebony (2) • Dark Chocolate (JR6) • Brazil Nut (JR8) • Walnut (JR10) • Pecan (JR12) • Ash Brown (JR14) • Frosted Pearl (17/101) • Sahara (1822) • Swedish Blonde (JR21) • Wheat (JR24L) • Mahogany (JR30) • Bordeaux (JR33) • Mink (JR38) • Silver Mink (JR48) • Platinum Grey (JR56) • Snow White (JR60) • Pearl (JR101C) • Butterscotch (1627)

## Asset

**Name:** Asset - AST

**Description:** A beautiful wig featuring lots of voluminous, flicked out layers, a wispy fringe and plenty of volume at the crown. Style with a brush to achieve a sleek, tidy look or ruffle with the fingers to accentuate the layers- the choice is yours!

**Cap Type:** Comfort Cap

**Cap Sizes:** Petite

**Length From Crown:** 3"

**Length From Nape:** 2"

**Length From Side of Head:** 3 1/2"

**Colours:** Chocolate Copper (L6/30) • Golden Walnut (LR1416) • Cappuccino Mist (G13+) • Buttered Toast Mist (G15+) • Wheat Mist (G20+) • Butterscotch Mist (G25+) • Dark Copper Mist (130+) • Chianti Mist (G135+) • Nutmeg Mist (G10+) • Platinum White (56/60) • Praline Mist (G19+)



## Aspire



Cappuccino Mist

**Name:** Aspire - APE

**Description:** A short, easy-care wig featuring beautiful, choppy layers and a nape-hugging neck defines Aspire - a flattering style which is comfortable and stylish.

**Cap Type:** Comfort Cap

**Cap Sizes:** Average

**Length From Crown:** 2"

**Length From Nape:** 1 1/2"

**Length From Side of Head:** 1 3/4"

**Colours:** Cappuccino Mist (G13+) • Chocolate Copper (L6/30) • Silver Mink (48) • Platinum White (56/60) • Ginger Brown (LG830) • Golden Walnut (LR1416) • Buttered Toast Mist (G15+) • Wheat Mist (G20+) • Sugared Almond (G58+) • Dark Copper Mist (130+) • Chianti Mist (G135+) • Nutmeg Mist (G10+) • Sugared Charcoal (511C) • Sugared Silver (G56+) • Praline Mist (G19+)

Name: Nice & Neat - ZNN

**Description:** This wig creates a tidy but full silhouette and features lots of textured layers and a wispy fringe. Perfect for anyone seeking an easy-to-wear, fuss-free style.

Cap Type: Comfort Cap

Cap Sizes: Petite

Length From Crown: 2" - 3"  
Length From Nape: 2"  
Length From Side of Head: 2 1/2"

Colours: Pecan (12) • Brazil Nut (8) • Ash Brown (14) • Honey Blonde (16) • Frosted Pearl (17/101) • Sahara (1822) • Onyx Grey (36) • Mink (38) • Silver Mink (48) • Sandy Pearl (49) • Pewter (51) • Platinum Grey (56) • Snow White (60) • Pearl (101)

## Nice & Neat



Pecan

Name: Janet - JT

**Description:** A soft, feminine wig, featuring all-over, textured layers and a light fringe - Janet is comfortable to wear and incredibly easy to style.

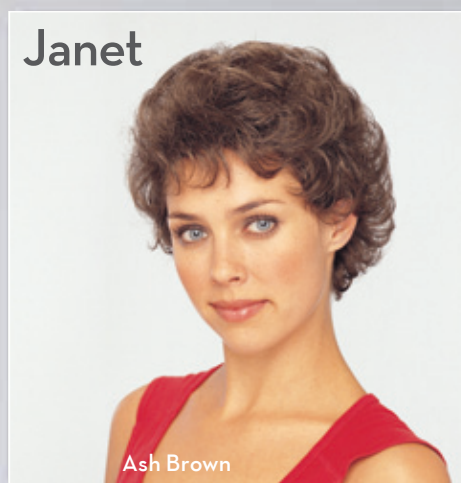
Cap Type: Comfort Cap

Cap Sizes: Average

Length From Crown: 3"  
Length From Nape: 2 1/2"  
Length From Side of Head: 3"

Colours: Ash Brown (14) • Brazil Nut (8) • Pecan (12) • Honey Blonde (16) • Frosted Pearl (17/101) • Sahara (1822) • Chardonnay (22) • Mink (38) • Silver Mink (48) • Platinum Grey (56) • Snow White (60) • Pearl (101B)

## Janet



Ash Brown

## Gemini



Bordeaux

Name: Gemini - ZGE

**Description:** Beautiful soft curls which drape down the neck, plenty of natural movement and a light, wispy fringe define Gemini- a stunning wig which is one of the most popular pieces in our classic collection.

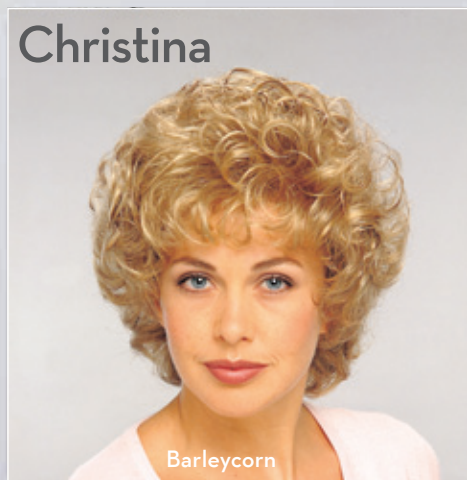
Cap Type: Comfort Cap

Cap Sizes: Average

Length From Crown: 3 1/4" - 4"  
Length From Nape: 6"  
Length From Side of Head: 4 1/2"

Colours: Bordeaux (33) • Midnight (1B) • Ebony (2) • Dark Chocolate (6) • Brazil Nut (8) • Pecan (12) • Ash Brown (14) • Honey Blonde (16) • Chardonnay (22) • Copper (27) • Mahogany (30) • Onyx Grey (36) • Mink (38) • Pearl (101) • Sahara (1822) • Frosted Pearl (17/101) • Shaded Wheat (1424) • Barleycorn (1426)

## Christina



Barleycorn

Name: Christina - ZCR

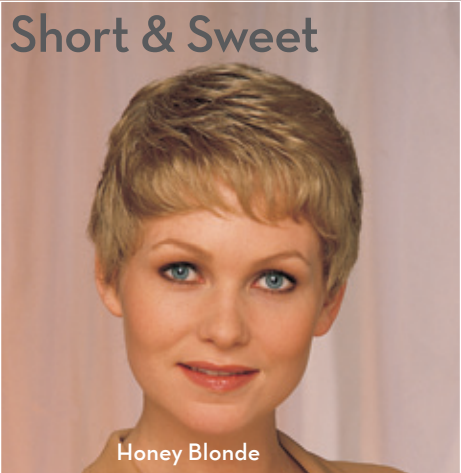
**Description:** Cascades of voluminous ringlet curls and a soft, bouncy fringe define Christina. A truly stunning style which is as elegant as it is timeless.

Cap Type: Comfort Cap

Cap Sizes: Average

Length From Crown: 4"  
Length From Nape: 4"  
Length From Side of Head: 3 1/2"

Colours: Barleycorn (1426) • Ebony (2) • Dark Chocolate (6) • Brazil Nut (8) • Pecan (12) • Ash Brown (14) • Honey Blonde (16) • Sahara (1822) • Frosted Pearl (17/101) • Chardonnay (22) • Mahogany (30) • Onyx Grey (36) • Mink (38)



## Short & Sweet

Honey Blonde

**Name:** Short & Sweet - ZSAS

**Description:** A classic, close-to-the-head wig featuring all-over layers and a wispy fringe makes Short and Sweet the perfect choice for anyone seeking an easy-care, easy-to-wear style.

**Cap Type:** Comfort Cap

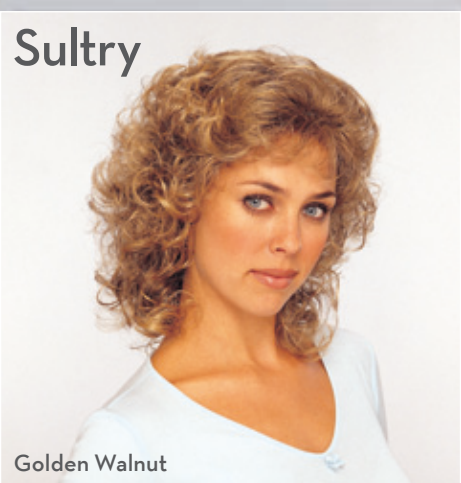
**Cap Sizes:** Petite

**Length From Crown:** 2" - 3"

**Length From Nape:** 1 3/4"

**Length From Side of Head:** 2 1/2"

**Colours:** Honey Blonde (16) • Ebony (2) • Dark Chocolate (6) • Brazil Nut (8) • Pecan (12) • Ash Brown (14) • Mink (38) • Silver Mink (48) • Platinum Grey (56) • Snow White (60) • Platinum (100) • Pearl (101) • Sahara (1822) • Barleycorn (1426RC)



## Sultry

Golden Walnut

**Name:** Sultry - ZNO3

**Description:** A long, stunning wig featuring cascades of soft curls which tumble down to the shoulders and a barely-there fringe makes Sultry the most perfect choice for anyone seeking effortless style and comfort.

**Cap Type:** Comfort Cap

**Cap Sizes:** Average

**Length From Crown:** 4" - 5 1/4"

**Length From Nape:** 6"

**Length From Side of Head:** 8"

**Colours:** Golden Walnut (1416) • Ebony (2) • Barleycorn (1426) • Butterscotch (1627) • Sahara (1822) • Dark Chocolate (JR6) • Brazil Nut (JR8) • Pecan (JR12) • Flame (JR130) • Ash Brown (JR14) • Swedish Blonde (JR21) • Wheat (JR24L) • Copper (JR27) • Bordeaux(JR33) • Honey Red (JR502+)

**Name:** Alex - ALE

**Description:** Gorgeously soft and bouncy ringlet curls teamed with a face-framing fringe make Alex a delightful wig which will be a joy to wear time-after-time.

**Cap Type:** Comfort Cap

**Cap Sizes:** Petite

**Length From Crown:** 4"

**Length From Nape:** 5"

**Length From Side of Head:** 3 1/2"

**Colours:** Sahara (1822) • Cappuccino (4) • Warm Brown (4/33) • Brazil Nut (8) • Soft Brown (8/12) • Pecan (12) • Barleycorn (1426) • Wheat (24L) • Copper (27) • Golden Wheat (1488)

## Alex



Sahara

**Name:** Petite Fluff - PF

**Description:** A short, easy to wear, classic style wig with perfect, fitted curls and incredible volume.

**Cap Type:** Comfort Cap

**Cap Sizes:** Petite

**Length From Crown:** 2 1/2"

**Length From Nape:** 2"

**Length From Side of Head:** 2"

**Colours:** Honey Blonde (16) • Ash Brown (14) • Frosted Pearl (17/101) • Sahara (1822) • Mink (38) • Silver Mink (48) • Pewter (51) • Platinum Grey (56) • Snow White (60) • Pearl (101)

## Petite Fluff



Honey Blonde

Name: Small Wonder - WSW

**Description:** Perfectly layered curls which create a glamorous silhouette makes this an easy to wear wig which is versatile and comfortable.

**Cap Type:** Comfort Cap

**Cap Sizes:** Petite

**Length From Crown:** 2 3/4" - 3 1/4"

**Length From Nape:** 2 1/4"

**Length From Side of Head:** 2 3/4"

**Colours:** Chardonnay (22) • Brazil Nut (8) • Pecan (12) • Ash Brown (14) • Sahara (1822) • Moonlight (335) • Mink (38) • Silver Brazil (40) • Silver Fox (400) • Platinum Grey (56) • Snow White (60) • Pearl (101)

## Small Wonder



Chardonnay

Name: Virgo - ZVI

**Description:** A beautifully soft and sweet style, the Virgo wig features lots of textured layers and a voluminous crown- creating a striking and elegant silhouette.

**Cap Type:** Comfort Cap

**Cap Sizes:** Average

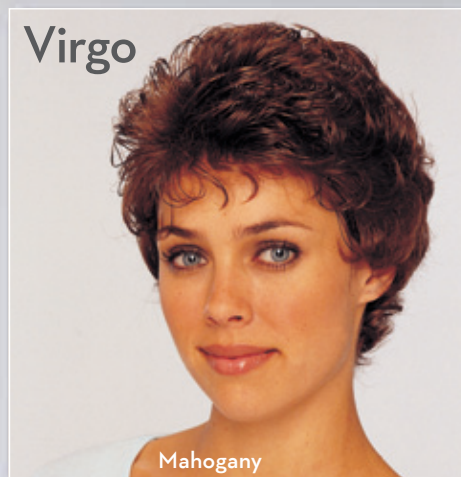
**Length From Crown:** 3 1/2" - 3 3/4"

**Length From Nape:** 2 1/2"

**Length From Side of Head:** 3"

**Colours:** Mahogany (30) • Dark Chocolate (6) • Brazil Nut (8) • Pecan (12) • Ash Brown (14) • Honey Blonde (16) • Frosted Pearl (17/101) • Sahara (1822) • Chardonnay (22) • Onyx Grey (36) • Mink (38) • Silver Mink (48) • Pewter (51) • Platinum Grey (56) • Snow White (60)

## Virgo



Mahogany

## Just Right



Honey Red

Name: Just Right - ZN13

**Description:** A classic style wig featuring stunning waves and a softly curved fringe defines Just Right- a timeless piece which creates an elegant silhouette.

**Cap Type:** Comfort Cap

**Cap Sizes:** Average

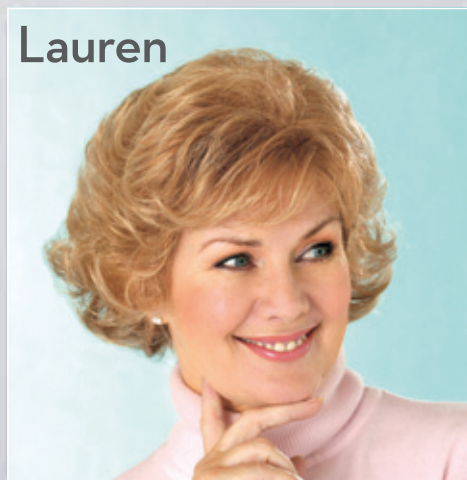
**Length From Crown:** 2 3/4" - 3 3/4"

**Length From Nape:** 2 3/4"

**Length From Side of Head:** 3 1/4"

**Colours:** Honey Red (JR502+) • Brazil Nut (JR8) • Walnut (JR10) • Pecan (JR12) • Ash Brown (JR14) • Frosted Pearl (17/101) • Sahara (1822) • Wheat (JR24L) • Mink (JR38) • Silver Mink (JR48) • Pewter (JR51) • Platinum Grey (JR56) • Snow White (JR60) • Pearl (JR101C) • Buttered Toast (JR504+)

## Lauren



Name: Lauren - ZN07

**Description:** A classic and modern wig style all at once- Lauren features gorgeous, bouncy layers and a fringe which can be brushed forwards or to the side.

**Cap Type:** Comfort Cap

**Cap Sizes:** Average

**Length From Crown:** 3 1/2" - 4 1/4"

**Length From Nape:** 2 3/4"

**Length From Side of Head:** 4 1/4"

**Colours:** Honey Red (JR502+) • Brazil Nut (JR8) • Pecan (JR12) • Ash Brown (JR14) • Sahara (1822) • Wheat (JR24L) • Mahogany (JR30) • Mink (JR38) • Pearl (JR101C)

## Milady



Chardonnay

**Name:** Milady - ZMIL

**Description:** A timeless piece with lots of curls and wonderful volume- Milady is a staple wig which can be worn all-day, everyday or for more formal occasions.

**Cap Type:** Comfort Cap

**Cap Sizes:** Average

**Length From Crown:** 4"

**Length From Nape:** 3 1/4"

**Length From Side of Head:** 4"

**Colours:** Chardonnay (22) • Ebony (2) • Dark Chocolate (6) • Brazil Nut (8) • Pecan (12) • Ash Brown (14) • Honey Blonde (16) • Frosted Pearl (17/101) • Sahara (1822) • Copper (27) • Mahogany (30) • Onyx Grey (36) • Mink (38) • Silver Mink (48) • Pewter (51) • Platinum Grey (56) • Pearl (101)

## Holly



Sahara

**Name:** Holly - ZHY

**Description:** Chic, easy to wear curls which create incredible volume and flatter a range of age-groups and face shapes make Holly a timeless wig which is perfect for both casual and formal wear.

**Cap Type:** Comfort Cap

**Cap Sizes:** Average

**Length From Crown:** 3 1/2"

**Length From Nape:** 2 1/4"

**Length From Side of Head:** 2 1/2"

**Colours:** Sahara (1822) • Pecan (12) • Ash Brown (14) • Honey Blonde (16) • Frosted Pearl (17/101) • Onyx Grey (36) • Mink (38) • Silver Mink (48) • Platinum Grey (56) • Snow White (60) • Pearl (101)

**Name:** Petite Spirit - ZN05

**Description:** A classic short and sweet style wig featuring a soft fringe and beautifully voluminous layers.

**Cap Type:** Comfort Cap

**Cap Sizes:** Petite

**Length From Crown:** 2 1/4"

**Length From Nape:** 2"

**Length From Side of Head:** 3"

**Colours:** Pecan (JR12) • Brazil Nut (JR8) • Walnut (JR10) • Ash Brown (JR14) • Sahara (1822) • Frosted Pearl (17/101) • Wheat (JR24L) • Mink (JR38) • Silver Mink (JR48) • Platinum Grey (JR56) • Snow White (JR60) • Snow White (60) • Pearl (JR101C) • Honey Red (JR502+)

## Petite Spirit



Pecan

**Name:** Duet - DU

**Description:** A ready-to-wear, classic, short cut featuring ever so light waved layers at the front and a nape hugging neck which creates a tidy fit.

**Cap Type:** Comfort Cap

**Cap Sizes:** Ultra Petite

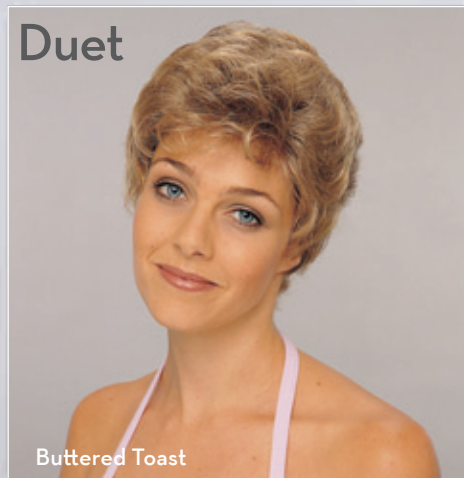
**Length From Crown:** 2"

**Length From Nape:** 3"

**Length From Side of Head:** 4"

**Colours:** Buttered Toast (LR1416) • Pecan (LR12) • Ash Brown (LR14) • Honey Blonde (L16) • Sahara (1822) • Shaded Wheat (24/14C) • Mink (38C) • Granite (44C) • Silver Mink (48C) • Pewter (51C) • Platinum Grey (56C) • Platinum White (56/60) • Snow White (L60) • Golden Wheat (LR14/88)

## Duet



Buttered Toast





**Name:** Poly Turban

**Description:** A plush, pleated polyester turban which is great for keeping hair tucked away and also a comfortable alternative to wearing a wig.

**Cap Sizes:** One size fits all

**Colours:** White • Black • Navy • Red • Fuschia • Cobalt • Ivory

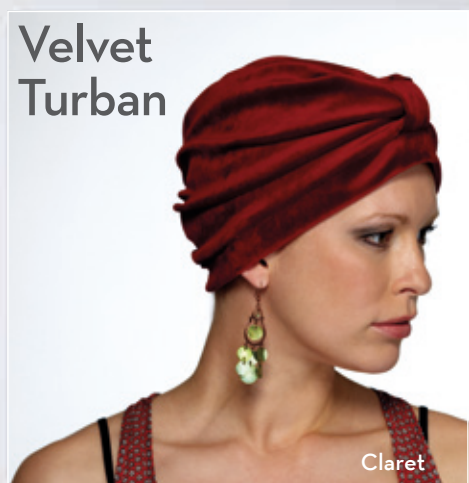


**Name:** Terry Turban

**Description:** Our soft, towelling turban is a fantastic alternative to wearing a wig and a comfortable way to keep your hair tucked away.

**Cap Sizes:** One size fits all

**Colours:** White • Black • Lilac • Sandstone • Pink • Navy • Cream

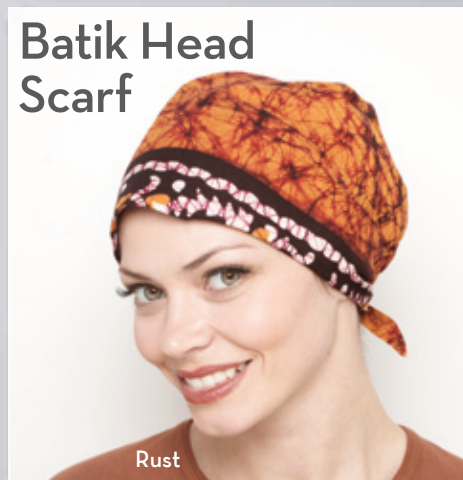


**Name:** Velvet Turban

**Description:** Our soft and comfortable velveteen turban is perfect for keeping your hair out of the way and also a great alternative to wearing a wig.

**Cap Sizes:** One size fits all

**Colours:** Navy • Claret • Bottle Green



**Name:** Batik Head Scarf

**Description:** A lightweight, vibrant headscarf which will add a splash of colour in an instant.

**Cap Sizes:** One size fits all

**Colours:** Rust • Blue • Purple • Red



**Name:** Cotton Head Scarf

**Description:** A pretty, patterned headscarf in a cool, lightweight cotton fabric.

**Cap Sizes:** One size fits all

**Colours:** White • Black • Beige • Cream • Navy • Maroon • Light Blue • Lilac

## Top Piece



Chocolate Copper



**Name:** Top Piece - TP

**Description:** A clever and discreet hairpiece which offers instant volume and coverage at the top of the head, with the snap of a clip! Simply clip in with the attached butterfly clips and style with the fingers for instant transformation.

**Cap Type:** Monofilament Top Clip On Hairpiece.

**Cap Sizes:** Average

**Length From Crown:** 4" - 7 1/2"

**Colours:** Butterscotch (1627) • Midnight (1B) • Cappuccino (4B) • Chocolate Copper (6/30) • Butterscotch (1627) • Walnut (10) • Pearl (101) • Soft Honey (1425) • Golden Wheat (1488) • Chardonnay (22) • Mink (38) • Silver Mink (48) • Platinum White (56/60)

**Name:** Integrated Flip - ITF

**Description:** A clever and discreet hairpiece which offers instant volume and coverage at the top of the head, with the snap of a clip! This oval shaped piece features beautiful, soft curls which will transform your look in an instant.

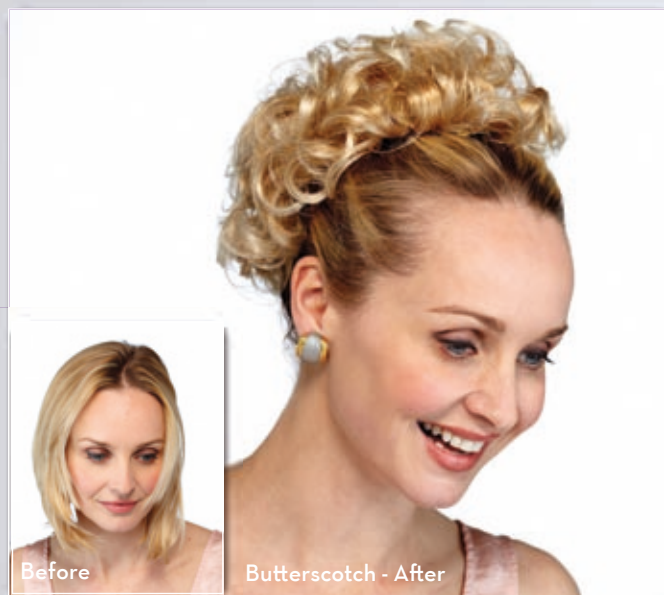
**Cap Type:** Comfort Cap

**Cap Sizes:** Average & Petite

**Length Top to Bottom:** 3 3/4"  
**Length Left to Right:** 6 5/8"

**Colours:** Butterscotch (B) • Platinum Grey/Pewter (51/56) • Platinum White (56/60) • Cappuccino (C) • Chestnut (CH) • Chocolate Copper (CHC) • Ginger Brown (GB) • Golden Wheat (GW) • Harvest Gold (HG) • Vanilla Lush (VL)

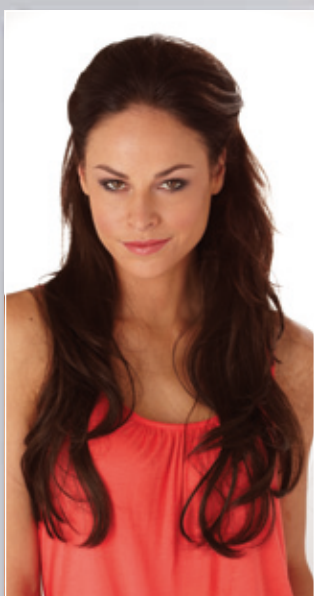
## Integrated Flip



Before

Butterscotch - After

## Brigette



Dark Chocolate

**Name:** Brigette - ZHT29

**Description:** Our most popular 3/4 piece, inspired by the likes of Cheryl Cole, Brigette is a deluxe hairpiece featuring luxuriously thick layers which add incredible length and volume in an instant. Easy to attach and incredibly comfortable, the Brigette is perfect for nights out, parties and weddings and comes on a flexible comb attachment which you simply slide into your hair.

**Cap Type:** 3/4 Hair Piece

**Cap Sizes:** Average

**Length From Crown:** 13" - 16"

**Length From Nape:** 19"

**Length From Side of Head:** 17"

**Colours:** Dark Chocolate (6) • Midnight (1B) • Ebony (2) • Brazil Nut (8) • Swedish Blonde (JRD21) • Golden Walnut (1416) • Barleycorn (1426) • Golden Wheat (1488) • Butterscotch (1627).

## Wig Care

Keep wigs and alternative hair looking their best with our carefully selected range of wig care and displays.

### Synovation:

The Synovation collection of 5 products has been especially designed to nurture and protect wigs and hairpieces and comes in a delightful fragrance of cucumber & mint.

**Conditioning Spray, Fibre Oil, Finishing Spray, Revitaliser, Shampoo**



### Accessories:

**Wooden Wig Brush**

**Styling Brush**

**Wig Tape**

Small 5m x 25mm large 23m x 25mm

**Wig Cap**

Light brown, Dark Brown

**Wig Mannequins**

Silver, Black or White, Available in forward or side

**Comfy Grips**

Hypoallergenic re-usable comfort headband designed to fit inside your wig to cushion & provide non-slip comfort

**Headline it!**

Thin disposable tan coloured liner that fixes securely inside any wig or cap to create a protective, discrete and breathable barrier. Box of 10

**Wig Stand**

**Polystyrene Styling Head**

N A T U R A L  
image



Distributed by

